



## Washington-Monroe Greenway Project

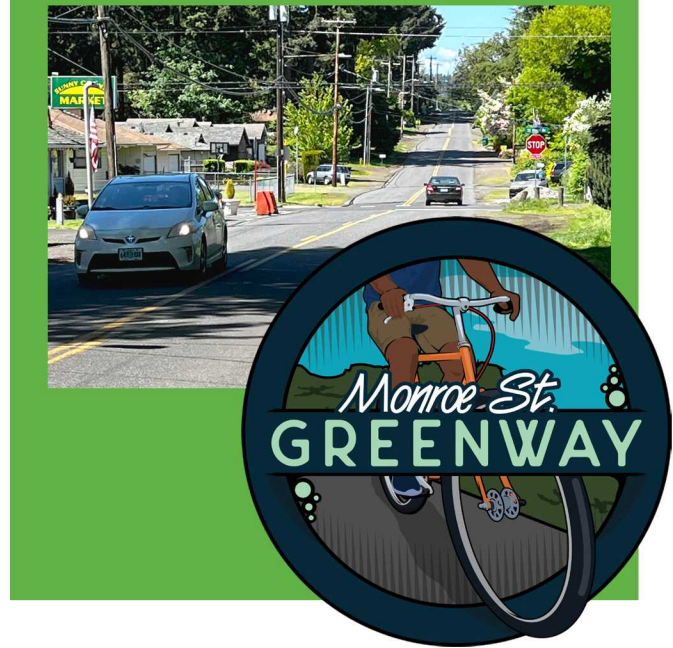


The City of Milwaukie is improving safety along a 1.25 mile stretch along SE Washington Street, SE Garrett Drive and SE Monroe Street. This is also called the “East Segment” of the longer Monroe Street Greenway.

### Through this project we will:

- Build and connect sidewalks:
  - » On the north side of SE Monroe Street from SE Garrett Drive to SE Stanley Avenue
  - » On the south side of SE Monroe Street from Stanley Avenue to Linwood Avenue
  - » On parts of Washington Street and Garrett Drive
- Narrow the road in some sections and add traffic calming measures such as speed cushions and stop signs.
- Add “sharrows” on the pavement to show cars to share roadway with bicycles.
- Upgrade intersection curb ramps to make them more accessible for all users.

This greenway will connect to the new 37th Avenue multiuse path and the Linwood Avenue multiuse paths.



### Project Schedule

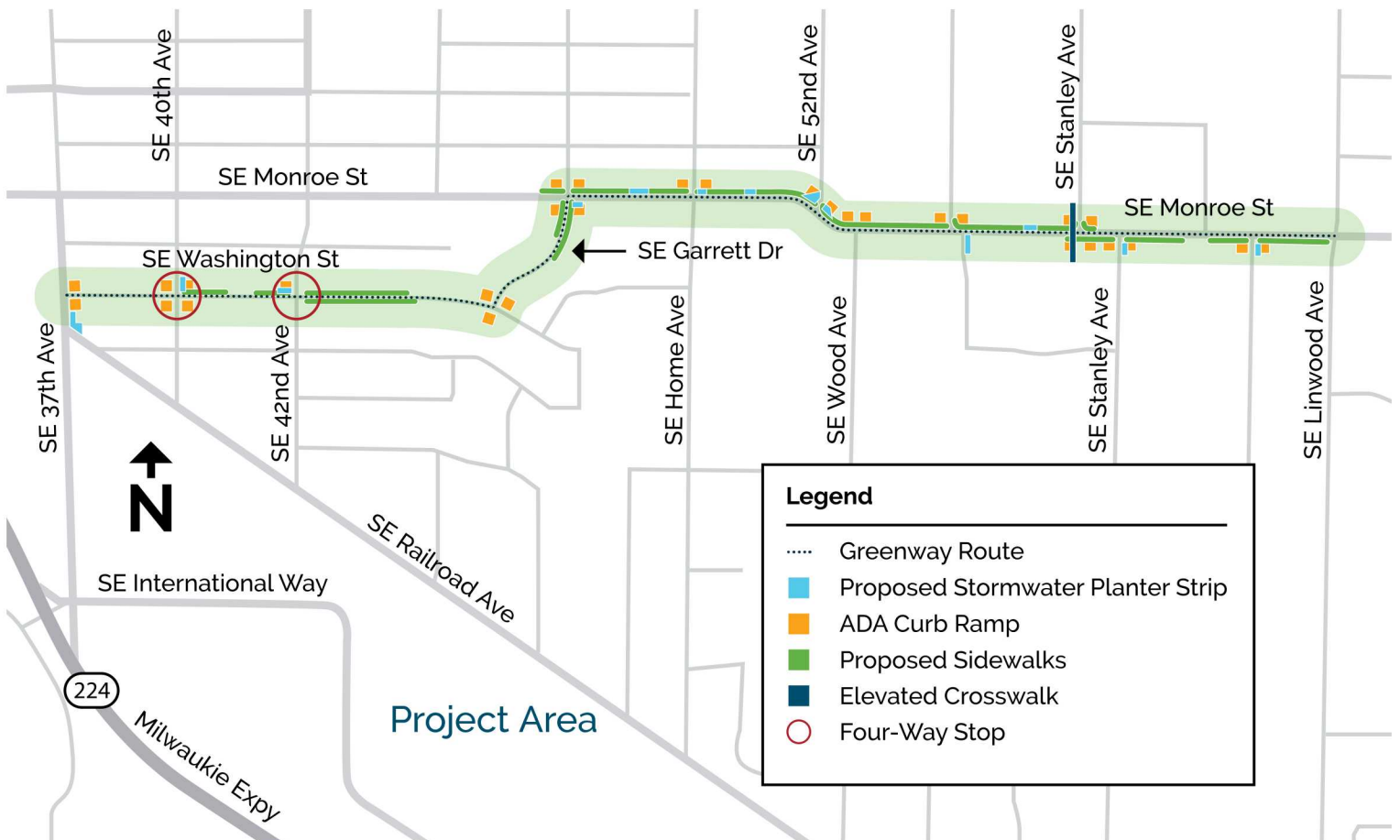
Washington-Monroe Greenway (or East Segment) timeline is below. We plan to design and build the Central and Downtown Segments in the coming years.



## What is a Greenway?

Neighborhood greenways are low-volume, low-speed routes that provide safe, quiet routes for motorists, pedestrians, and cyclists. Neighborhood greenways often include improvements that reduce vehicle speeds (for example, with curb extensions or mini traffic circles), which makes them safer and more inviting for neighbors, walkers, and bikers, while also reducing cut-through traffic from outside the neighborhood.

Monroe Street connects several neighborhoods and downtown Milwaukie. It was identified in the city's Transportation System Plan as a neighborhood greenway.



## For More Information

**Tanya Battye** *Project Manager, City of Milwaukie*  
503-786-7541 | [BattyeT@milwaukieoregon.gov](mailto:BattyeT@milwaukieoregon.gov)

## Project Website

[bit.ly/Monroe-Greenway](https://bit.ly/Monroe-Greenway)

