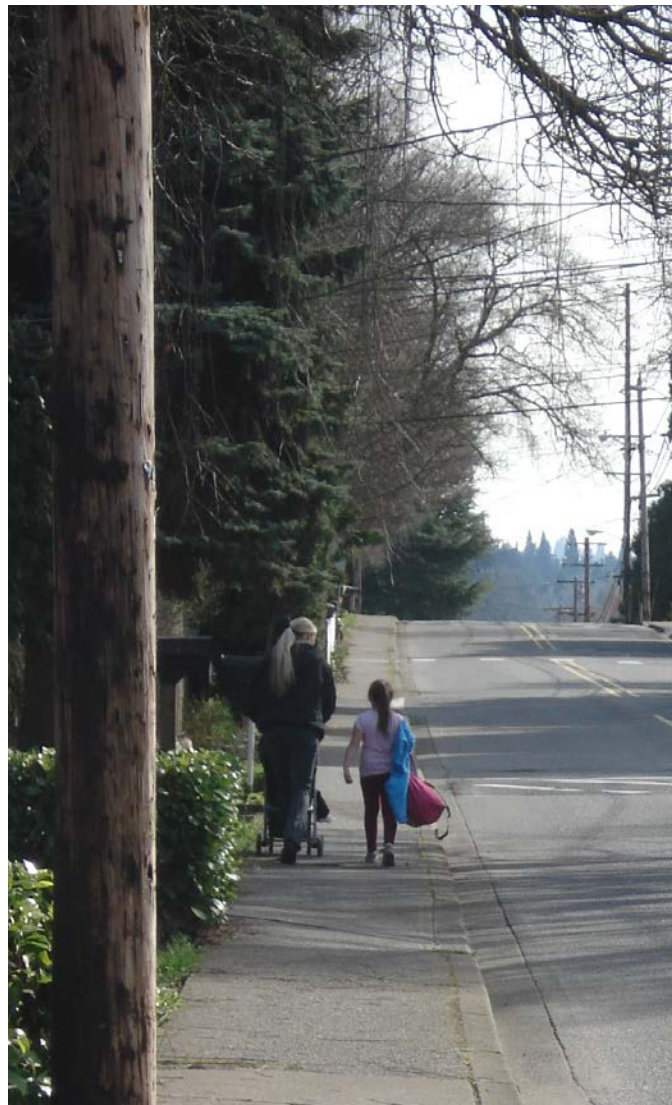
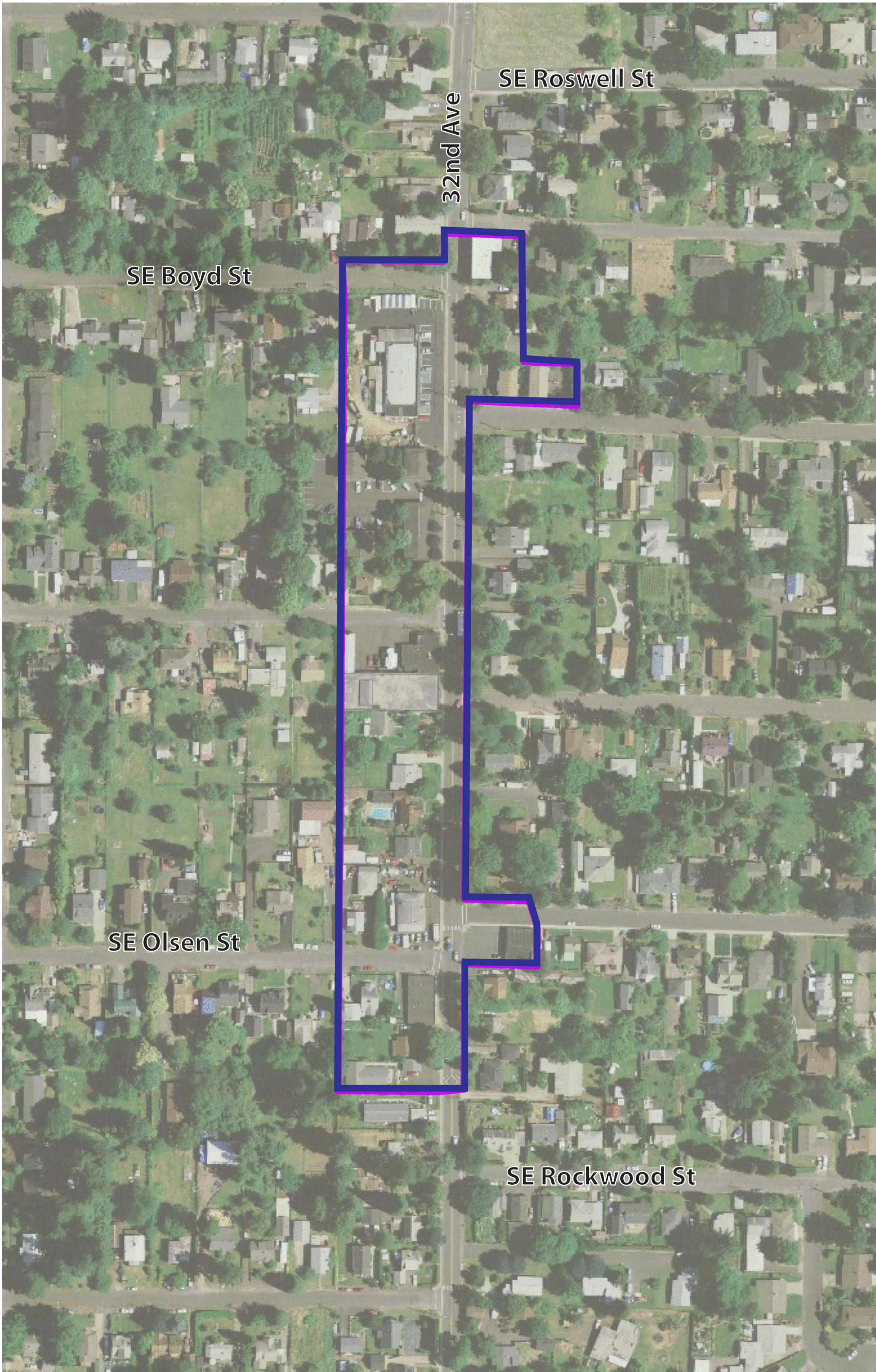


Neighborhood Main Streets Project : Project Area - 32nd Ave

Current Businesses:

- Lisac's Fireplaces and Stoves
- Art House Coffee Shop
- Eric's Market
- Cheryl's Canine Styling
- Luther Davis Auto Repair
- Barb's Catering



About this Area:

Current Zoning:

C-L (Commercial-Limited)

Total of **4.76 developable acres.**

Permitted & Conditional Uses:

- Business and Professional Office
- Retail
- Personal Services
- Parking Facility
- Agricultural/Horticultural
- Single Family Dwelling
- Retirement Housing

The current buildings contain **66,934 square feet of space**, which is less than total allowed.

Current Street Width: 40ft.

Parking: 2 on-street, approximately 50 off-street spaces.

Maximum Height: 3 stories or 45ft