

**Historic Milwaukie  
Neighborhood District Association  
Monday, October 14, 2024**

**In person at Milwaukie City Hall, 10501 SE Main St. and on Zoom**

**Present:**

**NDA Team:** Co-Chair, Debbie Liptan; Land Use Rep & Co-Chair, Val Hubbard (via Zoom); Land Use Chair, Zachary Pacholl; Treasurer, Linda Thomas; Secretary, Jennifer Murphy

**In Person Participants:**

Milwaukie Police Department Chief Ryan Burdick, Jackie Jackson, Jolenne Young, Michael Dewitz, Kelli Keehner, Amiel Jacobs, Stephanie Pino Heiss, Ray Bryan, St. John the Evangelist Church Reverend Jeanne Kaliszewski, Lynn Porta, Donna Baten, Milwaukie City Manager Emma Sagor, Shalena Havens, Vasco De Luca, Jean Wynn, MPD Behavioral Health Specialist Glen Suchanek, LoveOne Director Brandi Johnson

**Zoom Participants:**

Claire Lewis, Dr. Benach, Scott Davis, Steve

**Presentations & Discussions**

- Milwaukie Police Department - Chief Ryan Burdick discussed the investigation following the officer-involved shooting on September 30; information will be available following the 2-9 month process and grand jury findings. Upcoming events: 10/26 Craft with a Cop and the Trick or Treating on Main Street. Officer Barnett is now working independently after a lengthy training process.
- Behavioral Health Specialist - Glen Suchanek has been on the ground supporting our community's behavioral health for two years in this position. He works with 350 unique individuals, 96% of whom are housed neighbors. Presentation attached.
- LoveOne - Brandi Johnson's organization works with police departments in Milwaukie, Oregon City, and many rural areas to provide services to those who most need them: free laundry, meals, hygiene supplies, showers, food boxes, and more. In Redland, LoveOne in collaboration with Father's Heart, runs a rural food pantry that distributes 7-10K pounds of food every week to 400 people. These organizations make it easy to connect with those most in need, sign up to volunteer, meet neighbors, and lend a hand.

Learn more and get involved here: [loveonecommunity.org](http://loveonecommunity.org),  
[tfhstreetministry.com](http://tfhstreetministry.com).

- St. John the Evangelist Church Heating Center Proposed Project - Reverend Jeanne Kaliszewski updated us on their proposed plans for an emergency weather shelter in the church, beginning no sooner than one year from now. Father's Heart is the only warming shelter in Clackamas County. They will send 20 of only their most stable residents to the new overnight shelter. Built in partnership with LoveOne and MPD, we will evaluate the shelter's effectiveness after it has run one year. The church has been running a weekly feeding program for the last 30 years and houses the Sunshine Early Learning Center, the largest provider of low income preschool in Oregon. A number of things are still being researched, including funding and structural adaptations to the building. Reach out to Jeanne at [jeanne@stjt.org](mailto:jeanne@stjt.org).

### **Neighborhood Opportunities for Engagement**

- Washington Street Construction Follow Up - Ray Bryan let us know Washington Street is now safer with freshly marked cross walks.
- Announcements - Debbie Liptan shared updates.
  - Andy Fisher is our official Public Safety Advisory Committee (PSAC) rep and will begin reporting to us as of November. If anyone has a concern or comment they'd like Andy to bring forward, he can be reached at [andy@fisherandjanisse.com](mailto:andy@fisherandjanisse.com).
  - On October 17, PCLA hosts a live state legislative candidates and county commission candidates forum which can be watched here: [youtube.com/pclanacs](http://youtube.com/pclanacs).
  - October 26, 1:00-4:00pm we will host a Trick or Treat booth on Main Street, as part of the City's Trick or Treat event.
  - On Saturday, November 2, we host our Fall Clean Up Event on Main Street, beginning at 9:45. To participate, reach out: [debbieliptan@mac.com](mailto:debbieliptan@mac.com).
  - Bing in the New Year is a free, family-friendly event where a 7' bing cherry is dropped at 9pm. We made a \$500 sponsorship donation and get to run the event's selfie booth (event flyer attached).
- City Manager Introduction - Emma Sagor, Milwaukie's new City Manager, spoke. She is thrilled she was offered this dream job in this city she adores. Her focus is on revitalizing Milwaukie, helping those

most in need, working on business improvement grants, and she proclaims 2025 the year of the business.

- Business of Milwaukie Event - Kelly Keehner spoke of the Meet Milwaukie Event to introduce the "Business of Milwaukie" on November 1, 4:00-8:00 at Milwaukie Floral. Come for food, drink, community, and laughter.

### **HMNDA Current Business**

- Bing in the New Year Sponsorship Proposal - Debbie Liptan shared details about this event (above). She made a motion to fund a \$500 sponsorship to benefit the event and it was unanimously approved.
- Scott Park bench donation - Jennifer Murphy made a motion to purchase a park bench for \$2,697, a subject we have explored for the last year, and funds go toward park amenities. It was approved.
- Land-Use Updates - Zackary Pacholl - The Food Carts at 1915-1925 SE Scott St have been approved by the Milwaukie Planning Commission to move forward.
- Approval of Minutes - Minutes for September 2024 were approved.

### **Adjournment**

#### **Attached:**

- **Glen Suchanek's Presentation**
- **Samantha Swindler's Bing in the New Year flyer**



## CONTACTS:

Milwaukie Arts Committee, [milwaukiearts@gmail.com](mailto:milwaukiearts@gmail.com)  
Jordan Imlah, 503.786.7503, [imlahj@milwaukieoregon.gov](mailto:imlahj@milwaukieoregon.gov)

# JOIN BING IN THE NEW YEAR

The Milwaukie Arts Committee is organizing Bing in the New Year – a free, family-friendly event from **6-9 p.m. Dec. 31, 2024** to celebrate the new year with live music, vendors, a beer garden, Chinese cultural performances, and the lowering of a 7-foot lighted Bing cherry at Main & Harrison in downtown Milwaukie.

The event honors Ah Bing, who first cultivated the Bing cherry in Milwaukie in the 1880s.

We anticipate several thousand people will attend!



## HOW YOU CAN BE INVOLVED



### STAY OPEN ON DEC. 31

Tell us your hours and any specials (maybe cherry themed?) you will have that evening, and we will include you on a map of businesses and activities in downtown Milwaukie to share with attendees, at no cost to you.

**Email your info to [milwaukiearts@gmail.com](mailto:milwaukiearts@gmail.com).**

### BECOME A 'FRIEND OF BING'

**We are seeking \$250 "Friends of Bing" level sponsorships from local businesses** to put on this free, community event. Your contribution will put your logo on the event website and will include promotion on our social media platforms and on event posters. Checks of support can be made out to 'City of Milwaukie - Milwaukie Arts Committee.'



For more information about Bing in the New Year, please visit [binginthenewyear.com](http://binginthenewyear.com).

We are also fundraising for the event at:  
[gofundme.com/f/fund-milwaukies-bing-cherry-drop-celebration](https://www.gofundme.com/f/fund-milwaukies-bing-cherry-drop-celebration)

# Bing in the New Year

**DATE:** 12.31.2024 • 6-9:30 PM  
**LOCATION:** MILWAUKIE, OR  
**ANTICIPATED ATTENDANCE:** 3,000

Bing in the New Year is a free, family-friendly event to celebrate the New Year on Dec. 31, 2024 with the lowering of a 7-foot lighted Bing cherry in downtown Milwaukie. But, it's not just a party—it's a celebration of arts, history and culture.

The event will include lion dancers, vendors, kids' activities, live music and performances, culminating with the lowering by crane of the giant Bing cherry at a family-friendly "drop" time of 9 p.m. About 2,000 community members attended t's inaugural event last year, and it received substantial media coverage online, in print and on television.



## CONNECT TO THE MILWAUKIE COMMUNITY



Bing in the New Year is a great way for organizations to connect with the community in a meaningful way. The event brings together neighbors, friends and families for a one-of-a-kind holiday event in the heart of downtown Milwaukie. There is no other large-scale, free, family-centric New Year's Eve celebration in the Portland metropolitan area. It celebrates a cherished, fun-filled winter holiday, as well as a unique piece of history. The Bing cherry is the most popular cherry in the United States. It was cultivated in Milwaukie in 1875 by Ah Bing, a Chinese immigrant, who worked as an orchard foreman. Bing in the New Year celebrates this accomplishment and honors the legacy Bing holds in Milwaukie's story.

## EFFECTIVE COMMUNITY OUTREACH

The Milwaukie Arts Committee and City of Milwaukie have the ability to reach many community members through their online and printed communication channels. Here are some key numbers:

- **The Milwaukie Pilot** (city newsletter) mailed to approximately 18,000 addresses within city limits
- **Facebook:** Milwaukie Arts Committee - 2,030 followers, City of Milwaukie - 6,100 followers (as of 04.16.2024)
- **Twitter (X):** City of Milwaukie - 2,115 followers (as of 04.16.2024)
- **Instagram:** Milwaukie Arts Committee - 1,444 followers, City of Milwaukie - 2,304 followers (as of 04.16.2024)

The Milwaukie Arts Committee has seen success through a number of its outreach efforts, and plans to include several types of collateral to encourage attendance for Bing in the New Year:

- 11 x 17 in. posters distributed to area businesses
- Email notifications to all official Milwaukie neighborhoods
- Email notifications to Milwaukie businesses
- Extensive outreach through the city-coordinated booth at the Milwaukie Sunday Farmers Market
- Print and online advertising in multiple outlets leading up to the event

# SPONSORSHIP LEVELS

## PRESENTING SPONSOR

**\$5,000**

- Exclusive "Presented By" name in the event title
- Exclusive sponsor within the industry type
- Logo on all promotional advertising and collateral
- Logo on 2024 volunteer t-shirts
- Logo on all event signage
- Premier activity area location for maximum visibility
- Organization name and logo featured in all collateral materials
- Organizational banners displayed onsite throughout event
- Newsletter article features
- Features in social media marketing

## MAJOR SPONSORS

**\$2,000-4,500**

- Logo on all promotional advertising and collateral
- Logo on 2024 volunteer t-shirts
- Logo on extensive on-route signage
- Premier activity area locations for maximum visibility
- Newsletter article features
- Features in social media marketing
- No category exclusivity

## SUPPORTING SPONSORS

**\$500-1,500**

- Listing (no logo) in all promotional advertising and collateral
- Listing (no logo) on 2024 volunteer t-shirts
- Logo on extensive on-route signage
- 10 ft. x 10 ft. space at an activity area
- Mentions in social media marketing
- No category exclusivity

For more information about Bing in the New Year, please visit [www.binginthenewyear.com](http://www.binginthenewyear.com).



## CONTACT

Jordan Imlah  
503.786.7503  
imlahj@milwaukieoregon.gov



# MILWAUKIE POLICE DEPARTMENT, BEHAVIORAL HEALTH & LOVEONE

- RYAN BURDICK, POLICE CHIEF
- GLEN SUCHANEK, BHS
- BRANDI JOHNSON, LOVEONE



# AGENDA

- WHO ARE WE
- WHAT DO WE DO
- HOW DO WE PARTNER

Glen, our Behavioral Health Specialist, just de-escalating an agitated subject like he does.





# TEAM

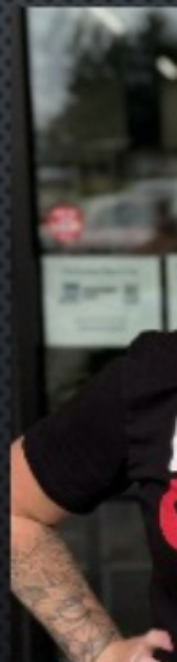
**CHIEF RYAN  
BURDICK** MILWAUKIE  
POLICE DEPARTMENT



**GLEN  
SUCHANEK**  
BEHAVIORAL HEALTH

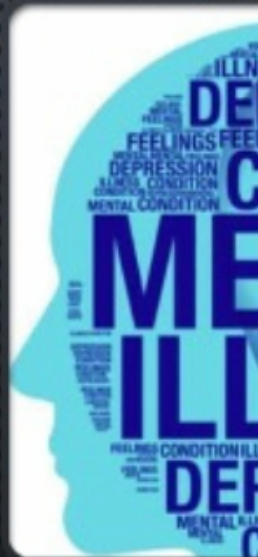


**BRA**  
LOVE



# BEHAVIORAL HEALTH SUPPORT

**“Your mental health is a priority. Your happiness is an essential. Your self-care is a necessity.”**



# STATS

	03/14/24 - 10/14/24
On Scene w/Officers	55
Police Report Follow Ups	63
Outreach	62
Phone Contact	127
Mobile w/o Officers	20

# LOVEONE

## Weekly Outreach

Tuesdays 10:00 AM-12:00 PM

Milwaukie Ledding Library

10660 SE 21st Ave St

Milwaukie, OR 97222

Assistance with basic needs,  
referrals, and resources



CITY OF MILWAUKIE

LOVEONE







THANK YOU

**CHIEF RYAN BUR**

MILWAUKIE POLICE D

**GLEN SUCHANE**

MILWAUKIE BEHAVIO

SPECIALIST

**BRANDI JOHNSO**

LOVEONE