





# Monthly Activities Board Report January 2025

## Director's Report:

### *New Library District Task Force:*

The County Commissioners acting as Library District Board unanimously approved the creation of a new Task Force to explore issues of services, funding, and governance. It will be a smaller task force than the previous one created with only 11 members.

All representatives will be from different jurisdictions and will maintain a balance between rural and urban areas. Membership will include: (1) Library District Director; (2) Mayors; (1) District Administrator; (2) Library Directors; (2) public members (either from LDAC or advisory Boards).

The meeting was about 30 minutes, so if you'd like to watch the full discussion, it's available here: [Policy Session: Library District Taskforce - Jan. 29, 2025 | Clackamas County](#)

### *The new library turns 5:*

In January this new Ledding Library building turned 5 years old, and we hosted a birthday party for the community. It's really important that we pause and mark these occasions. Special thanks to Jessalynn Gale who organized the event.

It was so lovely to see the community, library team, volunteers, and those other leaders who helped make our new library a reality celebrate the milestone. As director, it was humbling to witness the power of community, and I felt very proud of our collective work.

Thanks to Librarian Sara O'Donnell's design skills, and Jana Hoffman's persistence through the ordering process, we even had special edition stickers to mark the occasion.





And thank you to Jan Zumwalt who created the gratitude wall supplies. See some of that gratitude in the attached photos.



### *Friends of the Ledding Library*

Also this month, I attended the Friends of the Ledding Library’s annual meeting where I presented an update on how we used the \$41,000+ that their 4200 hours of volunteer work provided to support our community. As a reminder, they provide supplementary spending to support library programming, materials and supplies.

Without the Friends, we would not have the robust programming offering that this community enjoys. THANK YOU, FRIENDS! What you might not know is they also pay the annual costs of our Cultural Passes. This makes it possible to go to all of these places at no cost with a library card:


- Clackamas County Parks parking
- Crystal Springs Rhododendron Garden
- End of the Oregon Trail Interpretive Center
- Evergreen Aviation & Space Museum
- Gilbert House Children’s Museum
- Hallie Ford Museum of Art
- Lan Su Chinese Garden
- Leach Botanical Garden
- The Oregon Garden
- Oregon Historical Society
- Oregon State Parks Parking Permit
- Pittock Mansion
- Portland Art Museum
- Portland Japanese Garden
- and Portland Opera

Kelly Lamm looked at the numbers, and the return on investment is incredible:

2024:

- **1623** Cultural Passes were issued through the program.
- Friends’ cost for program: \$1200 per year
- Friends’ cost per pass: \$0.74 per pass
- Passes admit multiple people - some as many as 2 adults and any number of children per pass.
- **Estimated maximum face value: \$104,290.30**

With Friends' support, we started our new [Spice Club](#) program on February 1<sup>st</sup>. In just over a day, all 50 take-home kits went home to members of our community. We spoke with Friends of the Library officers, and they quickly increased funding for this program. Be on the lookout for new spice kits soon!

If you're interested in a summary of last year's spending with Friends' "Wish List" funding, and new things happening with Friends of the Library support in 2025, take a look at  [Friends Report January 2025.pptx](#)

#### *Leading Library of Milwaukie Foundation:*

The Foundation Board continues its work of long-range support for the library. At its new monthly meeting time, the 3<sup>rd</sup> Wednesday, 9-10:30, the board created its new "elevator speech" on what it supports and how to talk about it, came to consensus around a project to support, and discussed ways to operationalize thanking donors for gifts. Below is the "elevator speech," or a short version of what the foundation is about:

Milwaukie's Leading Library is tax supported, which provides funding that pays for staffing, supplies, most library materials, and repaying the bond that built our beautiful new library. To extend the reach of library services and programs and fully achieve its mission, the library depends on financial support from both the Library Foundation and the Friends of Leading Library.

[The Leading Library Foundation of Milwaukie](#) is dedicated to the long-range support of the library. The foundation was created to help support the initial construction of our new library. With a new library built, we are now pivoting to support Priority 1 of the library's [strategic plan](#): Improving Library Service at the Point of Need. Specifically, we want to fund projects that:

- Deliver service and materials beyond the physical building to areas underserved by the existing library location.
- Remove barriers to access

Examples of projects that could support this goal:

- Install holds pick-up lockers throughout the community to extend services.
- Invest in a library vehicle to help deliver services and materials outside of the physical library
- Install [hearing loop](#) systems at the library for improved access at programs and at service points.

### *How many hours of meetings per week?*

Although I took one week off for vacation, a lot of my remaining time was spent meeting with others and at public-facing programs. During January, I spent 53 hours in meetings and programs, or about 17.6 hours per week.

### *Oregon Public Libraries Statistics:*

Each year, libraries across the state submit data to the state library for a statewide dataset. The current data includes statistics from July 2023 to June 2024.

- The [Snapshot](#) view, provides a high-level overview of a library in various categories. One can select views by library and by year.
- The [Oregon Public Library Trends](#) tool allows one to select a library and review trends year over year in various categories.
- For the full data, and an old-fashioned spreadsheet approach, please visit the [Oregon State Library](#)

### Kudos:

Kudos to Kelly. Really lovely message from a patron on Facebook:

“Hi! I am sitting in here working at the moment and I just want to thank you (whole staff) and the manager who make this such a welcoming space for everyone. A person needed social resources came in and sat at my table just now. The manager, so lovingly, came and chatted with him and got to sit with him at a different table. Didn't ask him to leave. Didn't come with any energy but compassion. Being a Black woman myself, seeing a Black man, treated this way, touched me. It's a scary world. I, normally, would have been worried about how he would have been treated. Not today and not here. Thank you for making this moment and taking the opportunity for compassion.”

Kudos to Tara for the puzzle exchange. It is such a fun and valuable event to our community! Many puzzles were turned in for a VIP Golden Ticket and many people were so excited for the exchange day.

## Improving Library Services at the Point of Need:

Sara brought storytime and 40 books to the after-school program at Lot Whitcomb Elementary School. Federally funded by the 21<sup>st</sup> Century Community Learning Center Grant, the program is a free enrichment program for anyone attending the school. Sara plans to visit the Tues/Thurs group in February.

Jessalynn shared storytime and delivered another set of 40 books as well as an outreach book set to students in the after-school CARE program at Linwood Elementary School. The books are available for the students to use on site for the next 6 weeks.

Brent met with Jennifer Dove-Kiltow, NCSD Director of Children and Family Services, to discuss the possibility of adding book lockers at Wichita Center. It was a great conversation, and they'll be discussing how to make this happen in the future. Kudos to Foundation Board member Erin Lee for facilitating the introduction that led to this meeting.

## Supporting Staff:

Staff attended the All-Hands City Staff Meeting and then held library team meetings on January 28.

New On-Call Staff members Hannah Ginsberg, Cassidy Mahoney, and Sage Barnard-Davidson completed HR on-boarding in January and will complete training in February. Dana Lowe-Rogstad will join the on-call team in February.

Jessalynn and Tara participated in the first review of applications for the on-call librarian recruitment, along with Jana. Interviews are scheduled for February.

The adult and children's services teams both went out for lunch this month. The circ team enjoyed the same chance in December.

## Helping Milwaukians Most in Need:

Brent and Kelly toured the Wichita Center with other members of the Helping Milwaukians Most in Need Committee. We learned about the services they provided to support North Clackamas School District families including clothing, food, and school supplies along with social work, housing, WIC, and other social service resources.

Helping Milwaukians Most in Need at the Library 2024								
	Jan	Dec	Nov	Oct	Sep	Aug	Jul	
Weekly Tuesday Outreach Clients	20	13	15	6	11	7	13	
Water Bottles/Granola Bars	52	62	139	129	132	97	100	
Outreach Card Referrals	8	8	5	6	8	9	13	
Bus Passes	NA	NA	NA	NA	2	3	6	
Parole and Proboation Outreach	30	35	30	20	20	16	no data	
PITS Outreach Referrals noted	2	7	4	3	4	6	5	
Cooling Center Days	NA	NA	NA	NA	2	0	5	
Extended hours of Cooling Center	NA	NA	NA	NA	5	0	18	
Cooling Center Participants	NA	NA	NA	NA	10	0	65	
Cultural Passes	141	153	170	113	143	195	159	
Rent Well Participants	8	11	8	4				

### Community Partnerships, Collaborations and Connections:

On Wednesday, January 15 we hosted an evening screening and discussion of the documentary *No Place to Grow Old*. It was a packed house with 72 people in attendance.



The short 45 min. documentary humanizes the crisis faced by many seniors aging into homelessness. The director, Davey Schaupp, hosted a panel discussion and Q & A after the screening, which was a great opportunity for some of our community partners (LoveOne, Father's Heart) to talk about their work and how our community can support their work. On the panel were Don Holden and Brandi Johnson (LoveOne), Glen Suchanek (City of Milwaukee), Stephanie Hollingshead (Father's Heart), and Bronwyn Carver (one of the subjects of the film).

From Jana to our community partners and panel guests: *"It was a gift to have all of you in one room and then find 72 members of the community wanting to listen and learn. Thanks for being willing to share your stories and tears. It was powerful."*



From Glen Suchanek: *"You really hosted an amazing impactful event and I was lucky to be a part and support! Thank you so much!"*

From the film director, Davey Schaupp: *"Thank you again for all your hard work in making this event a success. It was truly a collaborative effort, and we're grateful for your partnership."*

Robert met with Brent Balog from Clackamas Worksource to discuss opportunities to partner. Use of the community room and bringing in organizations to talk with the community and staff were discussed.

### Programs and Outreach:

The Friends of Ledding Library sponsored a community singalong for all ages led by Portland Sing founder Carole Marie Downing. Using only call and response, she quickly had the entire group joining in. With harmony!

The Community Room became a finals week study hall for teens the last week of January. For three afternoons, we offered snacks, hot cocoa, and plenty of space to study for end of term exams.

During our storytime break month families enjoyed 2 baby sign and sign programs, a sing, sign & play class for preschoolers, a Spanish storytime and a drop-in playdate. Weekly storytimes resume in February.

Ledding Library hosted an official drop box for the Oregon Humanities' Dear Stranger letter exchange program.

On Saturday January 25<sup>th</sup> we held our 2<sup>nd</sup> Annual Puzzle Swap. 100s of puzzle were donated by community members and over 120 people attended this event to swap & pick out new puzzles.

Tara & Sara hosted an All Together Now Vision Boarding craft on Thursday January 16th. Library patrons of all ages hung out to collage, craft & manifest their dreams for the year 2025.

Book club news for January: The Daylight Book Club discussed Jhumpa Lahiri's *Roman Stories*. The Science Fiction & Fantasy Book Club talked about *A Discovery of Witches* by Deborah Harkness. The evening Ledding Book Club discussed a classic memoir, *A Woman in the Polar Night* by Christiane Ritter.

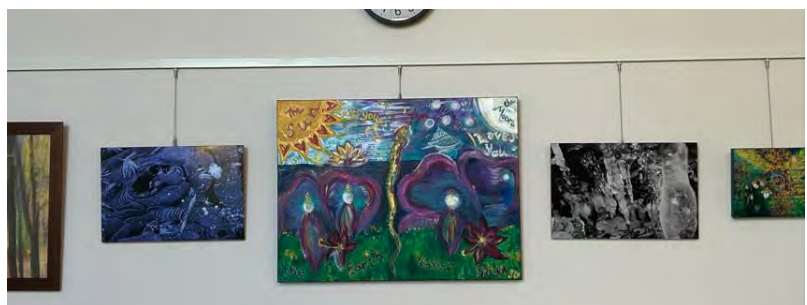
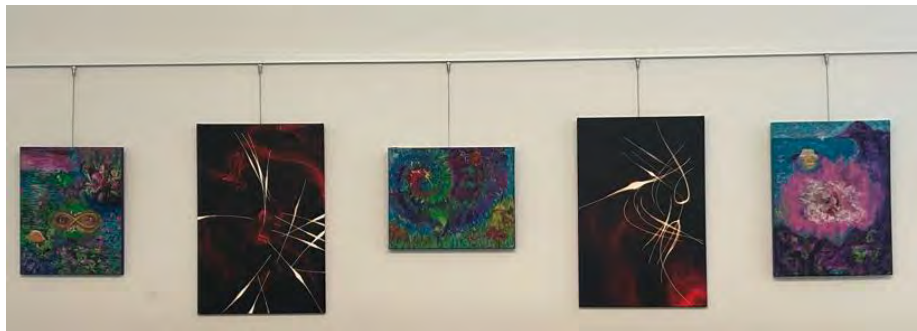
Outreach – Jana shared storytime with the Ready Set Go families in their Wichita classroom, with teacher Denys translating to Spanish.

**Displays:** Book displays throughout the library in January featured Staff Picks, Try Something New, Martin Luther King Jr. Day, and Lunar New Year. We also had a display of pins, stickers, pens, and bookmarks featuring the new LINCC logo.

### Other Highlights:

Artist and Milwaukie Arts Committee representative Sara Love McCoy will take the lead on installing art in the Community Room for the library. The first installation is complete, and community members are happy to see the transformation. Thank you, Friends, for providing the art rails!

*From barren to nice,  
that's quite a transition!  
The power of art. 😊*





Speaking of art, a local artist set up an easel painted in front of our windows. Looks awesome, right?

			<b>Ledding</b>	<b>Library</b>	<b>Statistics</b>		
			<b>January</b>	<b>2025</b>			
	<b>2025</b>	<b>2024</b>	<b>2023</b>	<b>2022</b>	<b>2021</b>	<b>2020</b>	<b>2019</b>
<b>Circulation</b>	58546	57541	53,220	46134	28,211	51,832	43,105
<b>Patron visits</b>	19625	16495	16367				
<b>New Cards</b>	370	324	405				
<b>Computer use</b>	1207	1037	1101				
<b>WiFi sessions</b>	1753	1358	1494				
<b>Questions (all desks)</b>	3022	2792	2,140				
<b>Programs</b>							
Adult	9	7	5				
Attendance	269	232	51				
Juvenile	24	15	18				
Attendance	1097		569				
Teen	5	7	6				
Attendance	143	30	24				
<b>Total Programs</b>	<b>38</b>	<b>29</b>	<b>29</b>				
<b>Total Attendance</b>	<b>1509</b>	<b>262</b>	<b>644</b>				
<b>Volunteers</b>							
Number	59*	67	57				
Hours worked	330*	419	351				
*Does not include book sorters or other hours will add when received							