



CITY OF MILWAUKIE

AGENDA

February 27, 2025

6:00 pm

PUBLIC SAFETY ADVISORY COMMITTEE

HYBRID MEETING

Public Safety Building

3200 SE Harrison St, Milwaukie, OR 97222

OR

Zoom Meeting:

<https://us02web.zoom.us/j/83859859220?pwd=WUxzV3liUFh4cmplOEsvaTRWelhhUT09>

Meeting ID: 838 5985 9220

Passcode: 705178

For any questions, please contact the staff liaison Benjamin Green at GreenB@milwaukieoregon.gov.

- I. CONSENT AGENDA
 - A. Mission Statement and Land Acknowledgement Statement
 - B. Approve Minutes from: All
1/23/25
- II. Public Comments (Limited to 3 min per person) All
- III. REPORTS
 - A. Emergency Management Update (6:05PM – 6:20) Dan Harris
 - B. Milwaukie Police Report (6:20PM – 6:30)
 - C. Accident Heat maps (6:30PM – 6:40) Jeff Tolentino
 - D. NDA Concerns (6:40PM – 7:05) PSAC Member
- IV. ACTION ITEMS
 - A. Spot Program
 - B. Bylaws Update
- V. DISCUSSION
 - A. SPOT Program (7:05PM – 7:30PM)
 - B. TSP Advisory Committee
- VI. FUTURE MEETING DATE/AGENDA ITEMS
 - A. Review bylaws – in progress
 - B. PSAC Council Update – March 2025 All

Next regular meeting March 27th, 2025

VII. ADJOURN

Attachments:

1. Minutes from: 1/23/25
2. Clackamas County Fire Report
3. Capital Improvement Project Updates
4. Spot Program Proposals
 - a. Speed Bumps on Wichita St north of King Rd (evaluation with Engineering comments)
 - b. Rectangular Rapid Flashing Beacon along Harrison St near East of 24th Ave (initial proposal)
5. Heat Maps
 - a. Bike and Pedestrian Accidents 2021 - 2024
 - b. Injury Related Traffic Accidents 2021 – 2024
 - c. Non injury Related Traffic Accidents 2021 - 2024

PSAC Meeting 1-23-25
Public Safety Building

Attendance:

Chair: Shimron Tubman (Linwood) Secretary: Jessica Peterson (Hector Campbell), Elvis Clark (Ardenwald), Christine Giatti (Lake Road), Jack (At-Large Member), Andy Fisher (Historic Milwaukie) City Engineering Liasons: Jeff Tolentino, Ben Green Police: Tony Cereghino

ZOOM

Vice Chair: Stephan Lashbrook (Lewelling, TSP), Julie King

A quorum was established
The meeting was called to order at 6pm by Chair Tubman

I. Approve Minutes

Changes to the December 12th, 2024 Meeting Minutes. The first entry is inaccurate in that we did not have a Nov meeting. The meeting minutes we approved in December should have been for our October meeting. The second entry did not reflect what happened accurately since Stephan was not present at the meeting. We will strike both of these entries from the meeting minutes:

“Motion to approve the minutes from Nov 27th “

“PSAC Response: Stephan will connect with applicant about its status as an unmaintained area and exorbitant cost of project.”

(Jack/Elvis) Motion to approve the minutes, with changes, from 12/12/24

6 approved/0 opposed/1 abstention Motion Carries

II. Public Comment

a. No public comments

III. Reports

A. Police Report – Tony Cereghino

- a. Incident on NYE- burglar caught via drone in Kronenberg Lake
- b. New officers bring experience from other locales- Hannah (lake Oswego), James Smith (warm springs)
- c. Chief Luke Straight is coming back to work as a detective and trainer
- d. MP is working with OneLove on garbage under the train trestle near Kronenberg Park. MP hoping to clean up by March
- e. Approx.23K calls in 2024, overall violent crime and unknown person-on-person crime has dropped

B. NDA Concerns

ARDENWALD- In reference to Harvey Street project- how long will construction last? Will there be an open house? Response: Construction will start this summer. Will get more info on expected completion date and possible sidewalk improvements

LINWOOD- nothing to report

HECTOR CAMPBELL: Harrison btw 42nd -37th Update- what are the plans for this busy road? Response: The city has received federal funding- SS4A Safety for All- which will be used to contract a consultant to run a 6month transportation study on Kind Rd/42nd all the way to Harrison/Hwy 224. (there is concern that this funding may dry up with the new administration)

Cascade Heights school drop-off is backing up onto Railroad Ave. Response: Currently working on speed zone signs for the neighborhood. The city has not gotten any other complaints related to this back-up.

HISTORIC MILWAUKIE: In reference to the resurfacing on 27th, NDA is interested in getting speed bumps put back in after roadwork is finished. Response: speed bumps make it difficult for public works to maintain roads (ie snow plowing) and has no plans to put back in since there is a 3-way stop in the middle of that street.

ISLAND STATION: (Rep not present) NDA has nominated someone but will take a month or more to get them to be an official PSAC member

LAKE ROAD: There is a flashing sign not working most of the time on Where Else Ln.

Residents on Gilford Dr. & Gilford Crt made a traffic request for stop sign back in 2021. Drivers often cut through when there's a backup on the left turn lane to Oatfield Rd. Residents would like some follow-up. Response: Engineering will look into the traffic request and the malfunctioning sign.

LEWELLING: nothing to report

IV. Action Items

(Andy/Christine) Motion to move action items after the discussion

6 approved Motion Carries

a. Bylaws Update

- i. Next month is our last meeting to finalize before going to council
- ii. Ben will send an updated bylaws for review and discussion

(Christine/Jack) Motion to accept updates on bylaws

#6 approved Motion Carries

- iii. Discussion about attendance requirement of 75% for good standing in the committee. We are changing the wording to "must attend 75% of meetings per year".

(Christine/ Jack) Motion to adopt code of conduct language in bylaws

#6 approved Motion Carries

V. Discussion

a. Milwaukie CERT

- i. Safety organization within the community- CERT volunteers often do traffic control at city events
- ii. CERT engagement – 2week ready program, flyers, guest speakers, 1-2x per year
- iii. Concern about Haunted Forest event on 10/31/24
 1. Haunted Forest event supported by Milwaukie PD & CERT
 2. There were 3 volunteers at entrance- 500 people attended= 125ppl per volunteer
 3. Concerned about safety of pedestrians with low visibility-more volunteers, increased lighting and road closure were recommended by CERT lead.

b. General ideas to increase access to safety resources specifically for NDA events

- i. Pool NDA money to buy barricades, etc
- ii. Appeal to city council for an increase in yearly funds
- iii. Better signage about the event for vehicles and pedestrians. See “CERT Concern for PSAC” for more suggestions
- iv. Consider events earlier in the day to avoid the darker hours
- v. Recruit early for more volunteers
- vi. Apply for SPOT program
- vii. Apply for city event grant program to pay for extra safety costs
- viii. Rent mobile lights (approx. \$140 per day)

c. Questions for city events coordinator?

- i. Is there room in the city event trailer for barricades?
- ii. Could there be a separate small event locker used for street closures? This would lower the burden for individuals wishing to make small events happen and ease the continued rental costs for larger events
- iii. Jessica will reach out to Jason Wachs to discuss opportunities for how small and large events could be better supported by City resources.

d. SPOT Program

- i. For future proposals: applications should be in by the **2nd Wednesday of the month** in order to be reviewed and discussed at the next month’s meeting
- ii. We have 3 proposals on the table today

Proposal #1- Hollywood Ave btw SE Willow & Hill St

Problem: Sunken grader that fills with water and makes it impossible for foot traffic year-round.

Proposed Solution: Fill-in with crushed rock and gravel then top the fill with compactable material to smooth surface.

Last meeting we discussed a one-time gravel drop. This measure is a short term solution that would help even out the street. However, it would not bring the condition to city standard and therefore residents on the street could not expect it to be regularly maintained. A PSAC member added, after walking and seeing the road, that outside the boundaries of the proposal there is a large pothole “pond” which should be included in the improvement.

Action: PSAC member will reach out to applicant to complete the 2nd Spot application while considering the boundaries may need to be extended.

(Stephan/Christine) Motion to do a one-time gravel drop on Hollywood

#5 approve 1 abstain 1 oppose

Motion Carries

Proposal #2- SE Stanley at SE Harlow Street

Problem: increased traffic on high-use school crosswalk

Proposed Solution: installing flashing crosswalk signals

Update on installing flashers at this location. Supplier- may need 2 radios for each pole. It is possible that Milwaukie city public works could do installation. Engineering is still gathering information on all the complexities of adding a new type of flasher into the city. Quote for equipment: about \$10K/Equipment and installation about \$50K. Solar powered beacons are looking much cheaper and eliminate the county involvement.

Proposal #3- SE Wichita Ave (between King Rd and Johnson Creek Blvd)

Problem: Road used as a cut-through to avoid Linwood, no sidewalks, child fatality in 2020

Proposed solution: two speed cushions

Reach out to proposer and ask to fill out 2nd form

(Christine/Jack) Motion to extend this evening’s meeting to 8pm

7 approved Motion Carries

- e. TSP Advisory
 - i. No update

- VI. Future Meeting Date /Agenda Items
 - a. February 20th, 2025
 - b. PSAC Bylaws

Adjourn 8pm

February 2025 Monthly Talking Points

- **Levy:**

- Continue to thank the community for their support of the Emergency Services Levy.
- Here are a couple updates for progress related to the levy:
 - Increasing total number of firefighters across the fire district by 62.
 - **Completed Objectives:**
 - Staffing increase at 7 community fire stations (and the areas they support):
 - **Station 1-Unincorporated Clackamas County, Happy Valley, Milwaukie** (added a quick response unit, R301, in January 2025)
 - **Station 8 - Clackamas, Happy Valley, Damascus**
 - **Station 13 - Clarkes, Beavercreek** (transitioned to 24/7 staffing)
 - **Station 14 - Boring, Eagle Creek**
 - **Station 15 - Oregon City**
 - **Station 16 - Oregon City, Beavercreek** (Medic 316 transitioned to 24/7 staffing)
 - **Station 19 – Damascus, Happy Valley, Boring**
 - **Upcoming Objectives**
 - 24/7 career staffing at Logan Fire Station #12 - **Summer of 2025**

**The levy info will continue so use discretion on what to repeatedly share. Early 2025 is a great time to recap the highlights noted above.*

- **Call Volume:**

- December 2024: 3,012 incidents. Almost 300 more than in December last year.
- 2024 total call volume: 34,119
- 2023 total call volume: 30,132 / 2022 total call volume: 27,975

- **Fire District Newsletter:**

- This year, The Fire District reintroduced a quarterly community newsletter that will be distributed. Since it is quarterly, this will not be an all-inclusive document for what is happening over the 3 months but rather will focus on some key areas to include regular levy updates. The newest issue is for October – December. The January 2025 edition will be available by late January.

- **Other District Info:**

- California Wildfires: On January 8th, as part of a Clackamas County Talk Force activated by the Oregon State Fire Marshal's Office, Clackamas Fire sent 3 interface fire engines, 1 water tender, and a total of 13 personnel to help battle the fires down south. Both strike teams have returned and are back serving here at home.
- The new quick response vehicle out of station #1 has begun responding to calls with an average of 15 calls a day. This allows the heavier apparatus to stay in service for larger, more involved incidents.
- In 2024, Clackamas Fire responded to 228 fire incidents. With an estimated total of \$81.65 million of property involved, \$63.5 million of that was saved through firefighting efforts.
- The fall career firefighter academy was just completed. This academy is to further support and enhance response within the community related to the levy approved in 2023 while

also backfilling positions through attrition. The next academy will begin in March with 10 new firefighters.

- 2024 Operation Santa Claus: The holiday season has come to an end and Clackamas Fire would like to thank the community for their support of the program and for all of the donated food and toys. The total number of collections this year were 5,570 toys and 8,800 lbs of food. This is the highest number of collection for both toys and food since 2019.
 - Backyard burning closed on December 15th and will not be open again until March 1st as outlined within Oregon Administrative Rules.
 - Nurse Navigation: The program launched in September. The program is in partnership with our 911 dispatching. This will help patients with non-emergency injuries or illnesses talk with a nurse and decide together about connecting with a doctor's office or urgent care clinic when appropriate instead of taking a costly ride in an ambulance or waiting for hours in an emergency room.
 - Wildfire Property Assessments: Though it is winter, now is a great time to begin to think about wildfire preparedness and your property's defensible space. If you are interested in receiving a free on-site defensible space assessment of your home and property, go to our website to complete the request form for a visit from the Fire District.
- **Safety Message**: In February, the Fire District safety focus will be on Hands Only CPR and clothes dryers.
 - **Hands Only CPR**
 - Of the 356,000 out of hospital cardiac arrests each year in the US, 80% occur within the home.
 - Less than ½ of those cardiac events receive bystander CPR.
 - If it is a witnessed arrest and you immediately call 9-1-1 and start chest compressions, you have doubled their chances of surviving. If you add in an AED, you have tripled their chances of survival.
 - **Clothes Dryers**
 - Have your dryer installed and serviced by a professional and follow the manufacturer's operating instructions.
 - Don't overload the dryer nor run it when you aren't home or when sleeping.
 - Keep the entire area clean and free of clutter, boxes and other materials.
 - Do not use the dryer without a lint filter and clean the lint filter between every load.
 - Check the vent system to make sure that it is not damaged, crushed or restricted.
 - Make sure that the outdoor vent covering opens when the dryer is operating.

PSAC CIP Update – February 2025

Meek Street – Contractor has completed installation of the pipeline between the Murphy Site and the Balfour Pond as well as from the pond to existing facility on Roswell St. Roswell Pond construction is continuing and is one of the last project milestones. The project is still anticipated to wrap up this Spring.

Hillside Phase I (Clackamas County Housing Authority Project) – Construction is underway for Phase 1/building C. Utility work is nearing completion. Clackamas Housing Authority is looking to begin the next phase.

Ardenwald North – Landis & Landis has been awarded the project. The contractor has mobilized to the project site and begun construction.

Harvey Street – The project is in 100% design development and anticipated to go out to bid this summer.

East Monroe Greenway – The project is in 60% design development. Staff provided an update to City Council on December 3, 2024 and are hoping to get funding for sidewalk on Monroe St west of Garrett St. Design to be completed end of 2025 and construction is anticipated for 2026.

Central Monroe – Sidewalk maintenance project for the railroad crossing on SE Oak St as well as SE 37th Ave. Design has begun.

King Road Improvements – Permit of Entry letters have been mailed sharing details of the 90% design and are currently receiving feedback about concerns with current design. As of January 2025, there have been POEs signed and returned to the City. It is expected to send all comments back to Kittleson for the preparation of the 100% design plans.

Washington Street – Currently, the new water line has been installed under Washington Street. A new PRV will be installed on the main waterline at Washington and 29th Street. Edison Street, 35th Avenue, and Washington Street asphalt paving will continue, weather permitting.

Kellogg Creek Restoration – Sediment testing was completed over the summer, and samples are currently being analyzed. Design and community engagement will begin sometime afterward. On December 12th, Metro announced that the project would receive \$10M in large scale community vision grant funds. These funds will be utilized as the local match requirement called out in federal grant applications.

Waverly Heights – The project is in 90% design development and staff are working to acquire temporary Construction Easements.

Waverly South/26th Ave – Design is on hold until winter 2025.

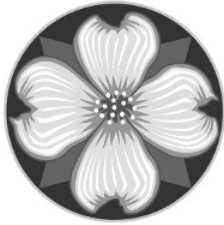
Downtown Curbs and Storm – Improvements to sidewalks and stormwater infrastructure on Main Street between Jefferson St and Monroe St have begun. The City has selected R.A. Roth Construction & Sons as the contractor. We are anticipating the project to be complete this Spring.

Downtown Streetscape Improvements (Main St) - The City will improve the sidewalk conditions along Main Street in Downtown. The design will be in-house. Currently the City is evaluating the

existing conditions of the sidewalk and contracting surveying services to start the engineering design.

Project pages - <https://www.milwaukieoregon.gov/projects>

Engage Milwaukie - <https://engage.milwaukieoregon.gov/>



**PUBLIC SAFETY ADVISORY
COMMITTEE (PSAC)**
10501 SE Main St
Milwaukie OR 97222
503-786-7606
engineering@milwaukieoregon.gov

Spot Program Proposal PSAC Evaluation

PROGRAM DESCRIPTION:

Small public safety project proposals (for example, Speed humps, pedestrian crosswalk signage, bump outs and re-painting crosswalks). The expected cost of any project submitted on the Spot program should be approximately \$25,000 or less.

INSTRUCTIONS:

Milwaukie community members can submit proposals for public-safety related improvements by completing the Spot Program Proposal – Initial Proposal Form, and submitting it to the Milwaukie Engineering Department or their local Neighborhood District Association (NDA) Representative on the Public Safety Advisory Committee (PSAC). Copies of the Spot Program Proposal - PSAC Evaluation Form are available on the City's website (at <https://www.milwaukieoregon.gov/engineering/safe/spot>).

Engineering and PSAC representatives will review proposals at a future PSAC meeting, and provide a prioritized list to the City's engineering staff. For proposals included on the prioritized list, a PSAC representative will complete and submit this form to Engineering staff. This form is required before any Engineering evaluation begins.

The Engineering staff evaluates each proposal and gets input from other departments (eg, Public Works and the Milwaukie Police Department) as warranted. If there are no concerns, the project will be scheduled for implementation. If there are concerns about the proposal, it will send it back to PSAC for further evaluation. The proposer of the project will be notified of the decision either by their PSAC representative or via email from a city Engineer.

Please complete each section as completely as possible. If you have questions about specific sections, or are unsure about how to answer specific question, please send an email to:

Jeffrey Tolentino
Assistant City Engineer
TolentinoJ@MilwaukieOregon.gov

CONTACT INFORMATION:

First Name: Jennifer (Nif)	Last Name: Lindsay
Mailing Address: 9509 SE Wichita Ave, Milwaukie OR	Zip: 97222
Phone(s): 503.206.2069	Email: nif.lindsay@gmail.com

LOCAL NEIGHBORHOOD DISTRICT ASSOCIATION (NDA) INFORMATION

NDA Name: Lewelling NDA
NDA PSAC Representative Name: Camden Mckone
NDA PSAC Representative phone:
NDA PSAC Representative email: lewellingndachair@gmail.com
PSAC approval date: December 2024

LOCATION (NEAREST ADDRESS OR INTERSECTION):

SE Wichita Ave, between King and Hazel
--

BRIEF DESCRIPTION OF THE PROBLEM:

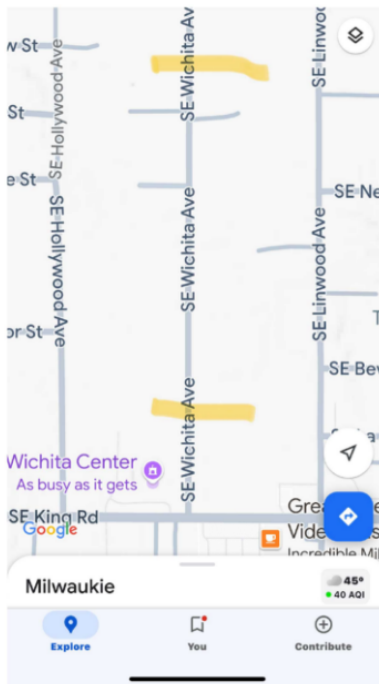
SE Wichita Ave is currently used as a short-cut to avoid traffic on Stanley and Linwood during rush hour. It's gotten worse since the renovations to Linwood in the past year. Since people using short-cuts are often in a rush, traffic speed has been clocked doing 45mph in a 25mph. There has already been a child fatality in 2020 (that's when the speeders were measured,). With a Head-Start program and athletic field at one end of the block at the Wichita Center, and a day care facility at the other end, and **NO CONNECTING SIDEWALKS**, protecting our neighborhood children means we need new measures to slow the increased traffic down.

We have the advantage of a one-lane bridge (maintained by Clackamas County?), at the Johnson Creek end of Wichita Ave. That means that installing traffic calming measures in the middle and at the King Road end would leverage the existing bridge-narrowing effect.

PROPOSED SOLUTION:

Two speed cushions, one by the back of the Wichita Center and one just before the street drops down to the Hazel Road intersection, would slow down speeders and improve the safety of pedestrians, especially children and bikers. At a cost of \$8k each, this solution fits well within the parameters of the SPOT program, and will redirect some non-local traffic back onto the artery of Linwood Ave, as designated in the transit plan.

MAP/SKETCH:



COM - Map added

QUESTIONS

Will the proposal require acquisition of new public right-of-way?

Yes No

If the proposal includes the possible use of any private property, it may require acquisition of that portion of the property for new public right-of-way. To determine if the proposal might be on private property, a map of private property in Milwaukie can be found at the link below:

[Property and Utility Map](#)

If yes, provide a location and estimated square footage. _____
(square footage should be estimated as accurately as possible)

Will the proposal trigger any Traffic Regulations?

Yes No

Some improvements may alter how traffic is enforced, such as changes to speed limits or installation of flashing beacons. Some signage, such as stop signs; or pavement markings, such as crosswalks, may also affect how traffic is enforced. These types of improvements require a formal process to establish the change called a Traffic Regulation (see [MMC 10.08.020](#)).

Will the proposal trigger a Milwaukie or DEQ erosion control permit?

Yes No

- If the proposal will disturb more than 500 square feet, a City of Milwaukie Erosion Control Permit.
- If the proposal will disturb between 1 and 5 acres of, the project would be covered under the City's 1200-CN permit (requires City of Milwaukie Erosion Control Application).
- If the proposal will disturb more than 5 acres, the proposal will require a 1200-C permit from DEQ.

More information about Erosion Control can be found at the link below:

<https://www.milwaukieoregon.gov/publicworks/erosion-prevention-and-control>

Will the proposal trigger a public tree permit (also known as right-of-way tree permit)?

Yes No

Public tree permits are required for the removal, or extensive pruning, of all trees greater than 2" (breast height diameter) that are located in public right-of-way.

Replanting is typically required as a condition of permit approval.

More information about Public Tree Permits can be found here:

<https://www.milwaukieoregon.gov/sustainability/tree-permitting>

QUESTIONS (Continued):

Does the proposal involve engineering analysis or engineering design?

Yes No

If yes, please describe. There has already been a speed study, assume no additional engineering required?

Typical examples for engineering analysis include: Traffic studies, speed studies, stormwater modeling, geotechnical study, etc.

Typical examples of engineering design include: Utility piping, changes to intersection configuration, Rectangular Reflective Flashing Beacons, etc.

Will the proposal require any long-term maintenance?

Yes No

If yes, please describe. COM - Public works may have some comment on this with respect to plowing. Wichita is not a high priority road for snow removal, so may not be a big issue.

Examples of long-term maintenance include: Managing vegetation (tree trimming, weeding, watering, etc), sediment removal (drywells, rain gardens), battery replacements, etc.

Will the proposal alter or modify any private property?

Yes No

If yes, please describe. _____

Property address: _____

Owner last name: _____

Owner first name: _____

Owner phone: _____

Owner email: _____

Has the property owner been contacted?

Yes No

A map of private property in Milwaukie can be found at the link below:

[Property and Utility Map](#)

Are there any other impacts that may affect any property owners in the immediate vicinity of the proposed improvements (Noise, visual etc.)?

Yes No

If yes, please describe. _____

Property address: _____

Owner last name: _____

Owner first name: _____

Owner phone: _____

Owner email: _____

Has the property owner been contacted?

Yes No

If multiple properties might be affected, please provide the above in a separate list.

A map of private property in Milwaukie can be found at the link below:

[Property and Utility Map](#)

Has the site visit with resident, NDA and city staff been held?

Yes No

If yes, when and who attended? Shimron Tubman, city staff. _____

Proposed cost: \$16,000

Requested SPOT funding: \$16,000

Desired Schedule: Installation during school holiday please.

OFFICE PROCESSING:

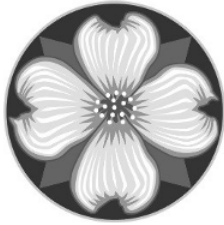
Received by:

Date:

Considered by PSAC on:

Response:

Comments:



**PUBLIC SAFETY ADVISORY
COMMITTEE (PSAC)**
10501 SE Main St
Milwaukie OR 97222
503-786-7606
engineering@milwaukieoregon.gov

Spot Program Proposal Initial Proposal

PROGRAM DESCRIPTION:

Small public safety project proposals (for example, Speed humps, pedestrian crosswalk signage, bump outs and re-painting crosswalks). The expected cost of any project submitted on the Spot program should be approximately \$25,000 or less.

INSTRUCTIONS:

If you have identified a problem and a corresponding improvement opportunity related to public safety, complete this form. Copies of this form are available on the city's website (at <https://www.milwaukieoregon.gov/engineering/safe/spot>), or through your local Neighborhood District Association (NDA) representative. The completed form can be submitted by:

- Emailing a copy to: engineering@milwaukieoregon.gov.
- Giving a hard copy to the NDA's representative on the Public Safety Advisory Committee (PSAC).
- Mailing a copy to:
Milwaukie Engineering Department
Spot Program
10501 SE Main St
Milwaukie, OR 97222

PSAC will evaluate all Spot program proposals submitted each month and provide a prioritized list to the city's Engineering staff. During their review, PSAC considers the proposal's merit, available funding, and equitable distribution of Spot programs across the city, among other considerations.

The Engineering staff evaluates each proposal and gets input from other departments (eg, Public Works and the Milwaukie Police Department) as warranted. If there are no concerns, the project will be scheduled for implementation. If there are concerns about the proposal, it will send it back to PSAC for further evaluation. The proposer of the project will be notified of the decision either by their NDA's PSAC representative or via email from a city Engineer.

Supplemental Information

The City of Milwaukie encourages project proposers to include as much information as practical in the initial proposal, but it may be necessary to develop additional information after submission. Proposals do not need complete information for initial consideration.

Given the inherent difficulty for community and PSAC members to anticipate the cost of a project, or the unintended consequences that a proposed project could have on such things as traffic patterns, emergency vehicle access or long term street maintenance, it is anticipated that many proposed projects may not gain approval through the Spot program. Other funding mechanisms (eg. SAFE routes to schools and capital improvement projects) exist that may be better suited for some projects. For that reason, PSAC will include more projects on the list submitted to Engineering for evaluation than can be funded; and PSAC will be expected to prioritize the projects after their costs are better understood.

PROPOSER:

First Name:	Val Hubbard & Debbie Lipton	Last Name:	
Mailing address:	1325 SE 27th Ave	Zip:	97222
Phone(s):	503-475-6030 / 503-784-3063	Email:	valhubbard@comcast.net / debbieliptan@mac.com
Neighborhood District Association:	Historic NDA		

LOCATION (NEAREST ADDRESS OR INTERSECTION):

Harrison & Main and Harrison and 24th

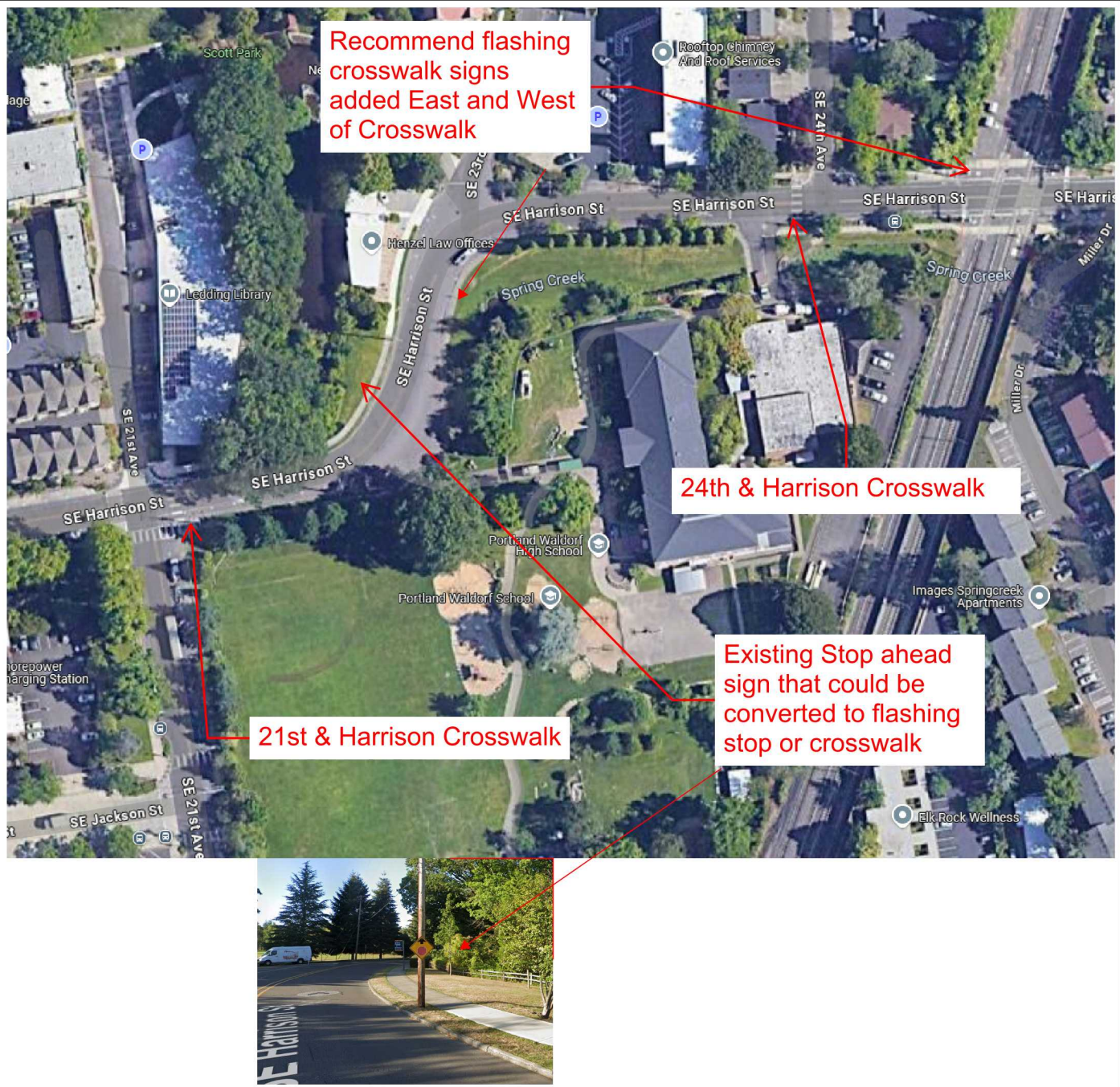
BRIEF DESCRIPTION OF THE PROBLEM:

<p>There are crosswalks at both intersections that motorists are hindered in seeing by the large S-curve that creates a blind corner. Motorists, especially traveling downhill (west on Harrison) often miss the crosswalk and upcoming stop sign and either roll through the intersections or come to abrupt stops.</p>
--

PROPOSED SOLUTION:

<p>There are existing crosswalk signs that could be converted to solar LED flashers at both intersections. These could be triggered by button at the Harrison and 24th crossing (Waldorf School) and by either infrared barricade or button at the 21st and Harrison crosswalk. Additional signs could also be installed.</p>

MAP/SKETCH:

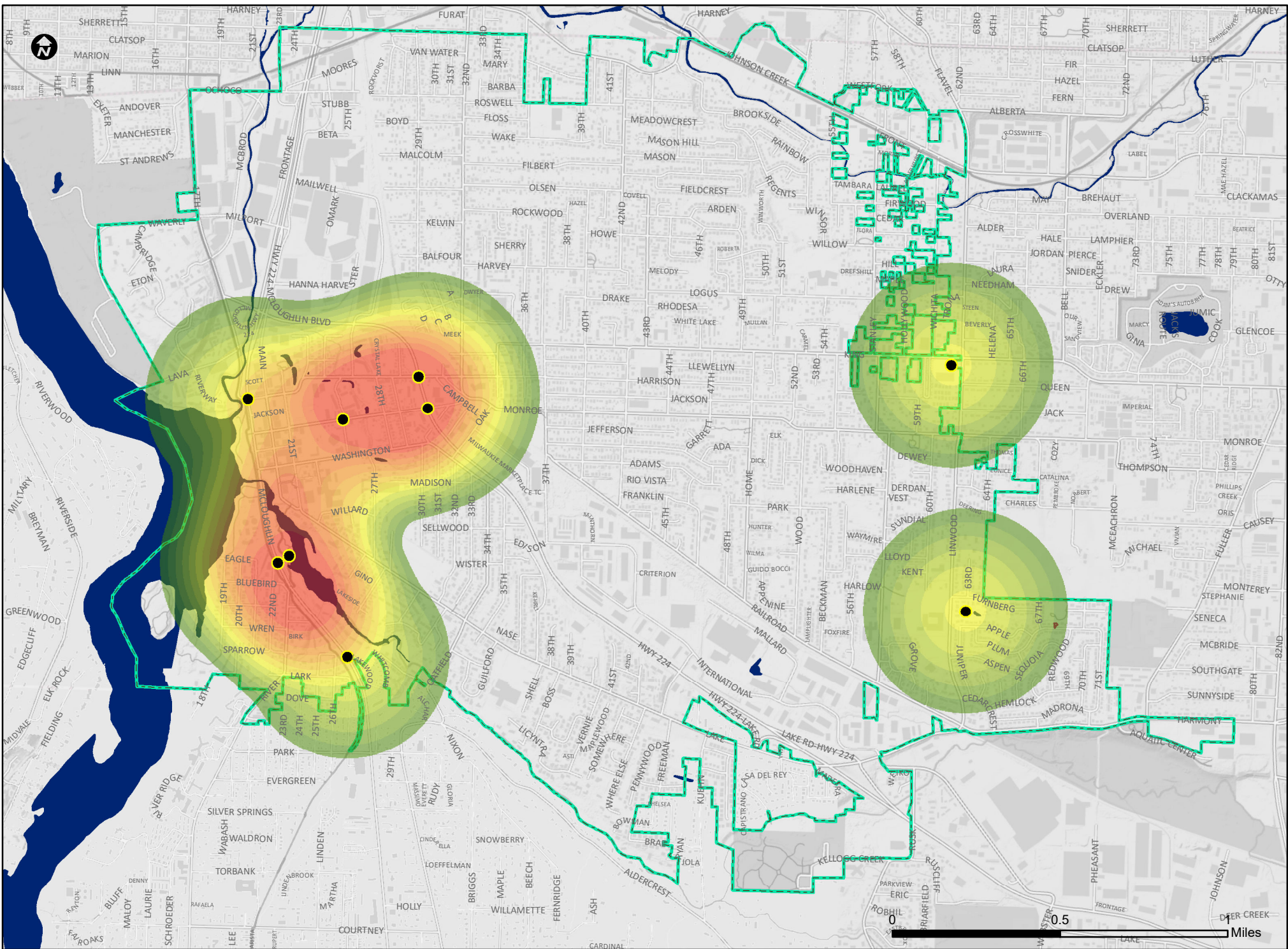


PRELIMINARY COST (PROVIDE ANY ANTICIPATED COSTS):

Depending on solutions selected, with self contained radio transmitters and solar signs could be \$15k-25k+

OFFICE PROCESSING:

Received by:	Date:
Considered by PSAC on:	Response:

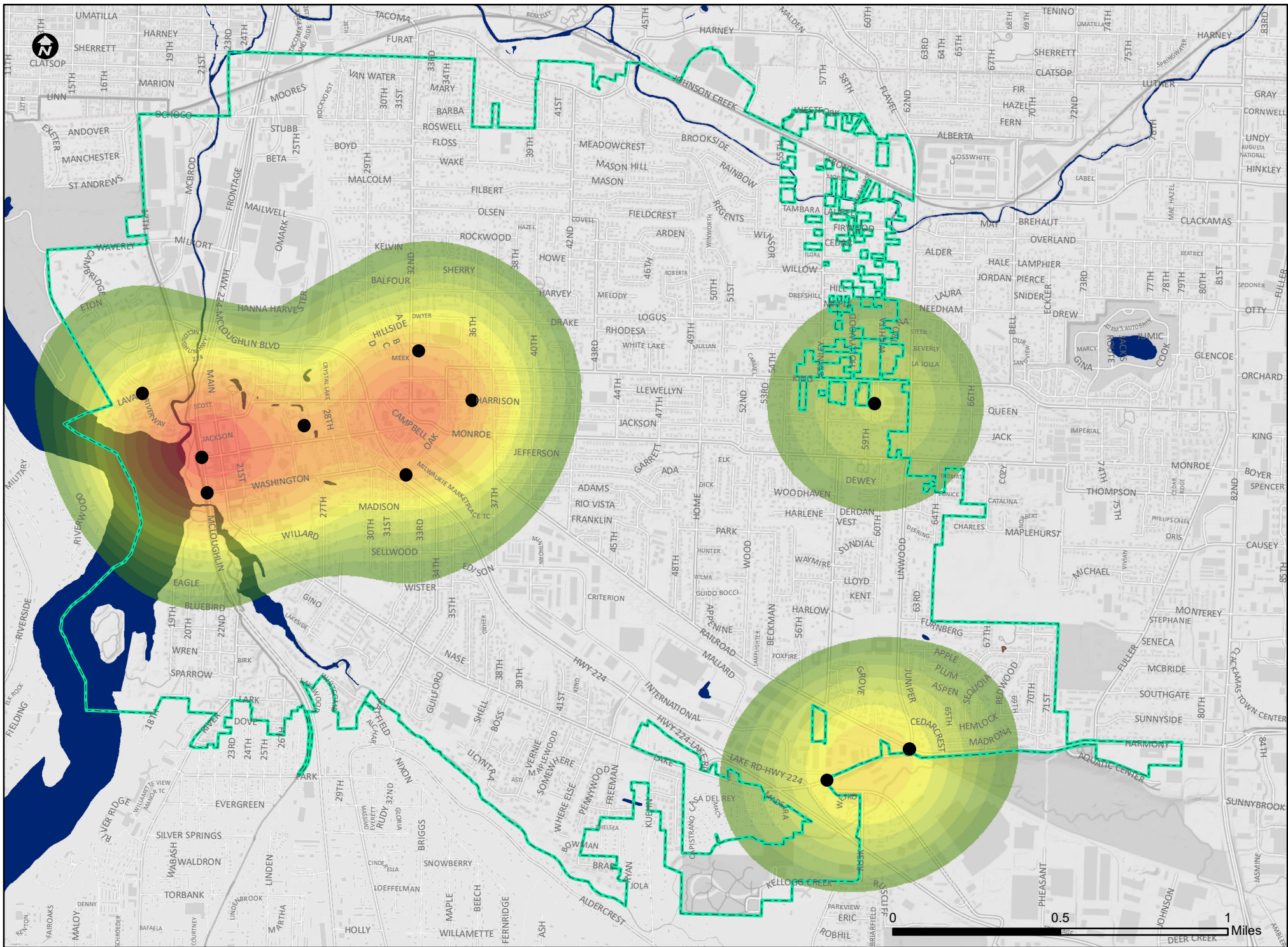


Bike and Pedestrian Traffic Accidents 2024

● Bike and Pedestrian Traffic Accidents □ Milwaukee City Limits [Color Scale] Increased Accidents

The information depicted on this map is for general reference only. The City of Milwaukee cannot accept any responsibility for errors, omissions or positional accuracy. There are no warranties, expressed or implied, including the warranty of merchantability or fitness for a particular purpose, accompanying this product. However, notification of errors would be appreciated. Date: 2/10/2025 Data Sources: City of Milwaukee GIS, Metro Data Resource Center.



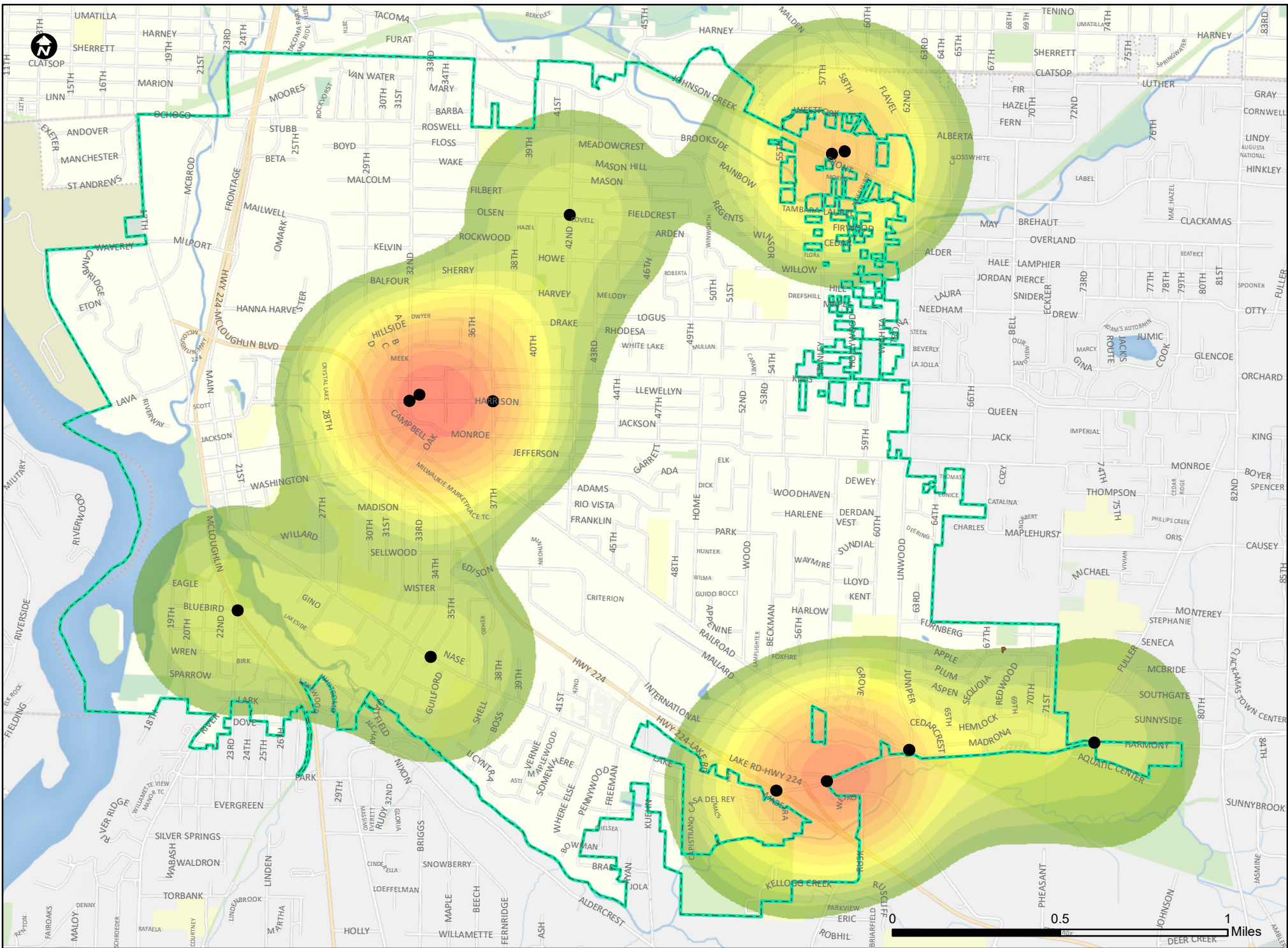


Bike and Pedestrian Traffic Accidents 2023


• Bike and Pedestrian Traffic Accidents Milwaukee City Limits Increased Accidents

The information depicted on this map is for general reference only. The City of Milwaukee cannot accept any responsibility for errors, omissions or positional accuracy. There are no warranties, expressed or implied. Date: 1/25/2024 including the warranty of merchantability or fitness for a particular purpose, accompanying this product. However, notification of errors would be appreciated. Data Sources: City of Milwaukee GIS, Metro Data Resource Center.



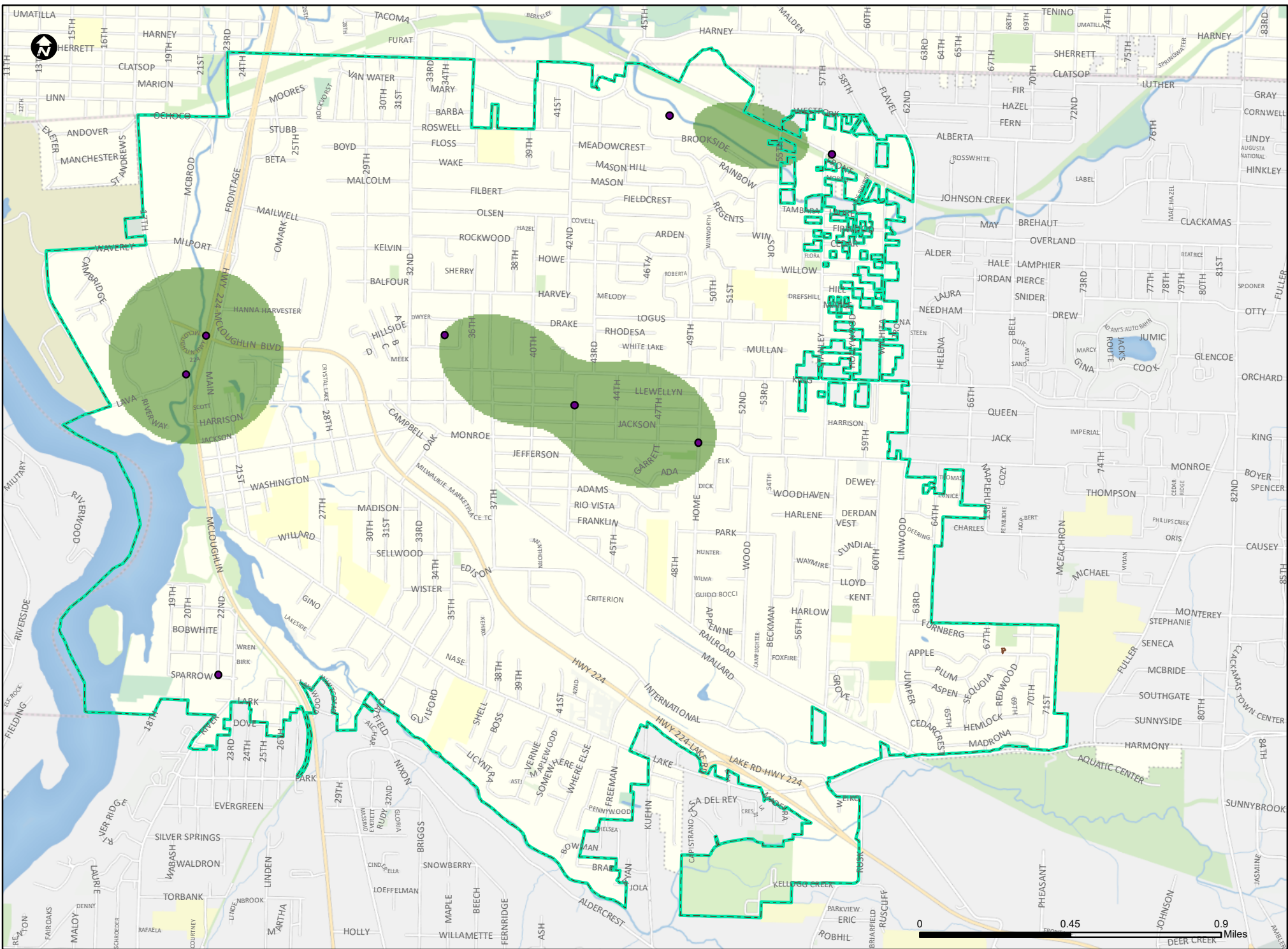


Bike and Pedestrian Traffic Accidents 2022

• Bike and Pedestrian Traffic Accidents  Milwaukee City Limits  Increased Accidents

The information depicted on this map is for general reference only. The City of Milwaukee cannot accept any responsibility for errors, omissions or positional accuracy. There are no warranties, expressed or implied. Date: 3/1/2023 including the warranty of merchantability or fitness for a particular purpose, accompanying this product. However, notification of errors would be appreciated. Data Sources: City of Milwaukee GIS, Metro Data Resource Center.



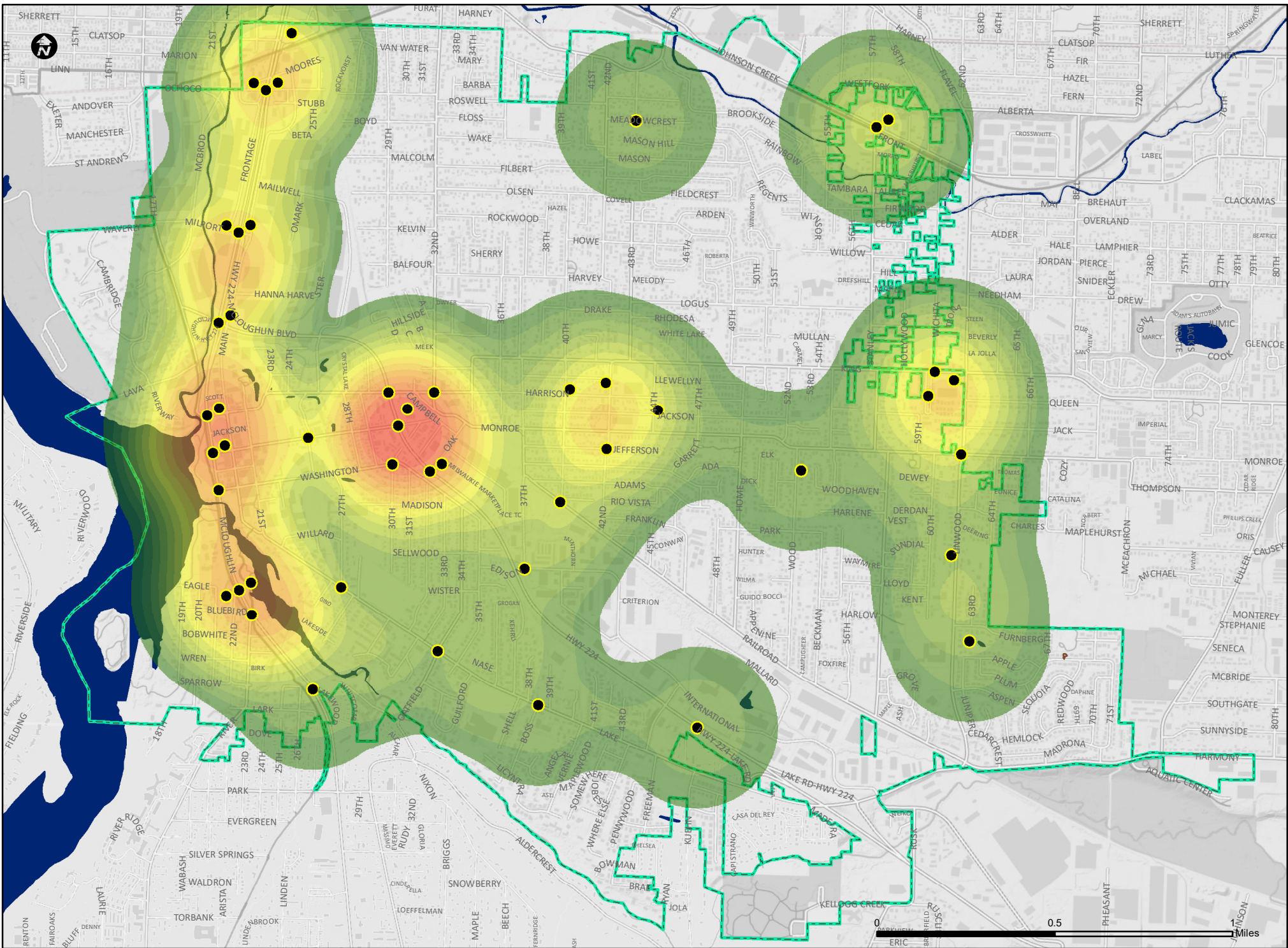


Bike and Pedestrian Traffic Accidents 2021

• Bike and Pedestrian Traffic Accidents Milwaukee City Limits Increased Accidents

The information depicted on this map is for general reference only. The City of Milwaukee cannot accept any responsibility for errors, omissions or positional accuracy. There are no warranties, expressed or implied, including the warranty of merchantability or fitness for a particular purpose, accompanying this product. However, notification of errors would be appreciated. Date: 1/25/2022. Data Sources: City of Milwaukee GIS, Metro Data Resource Center.



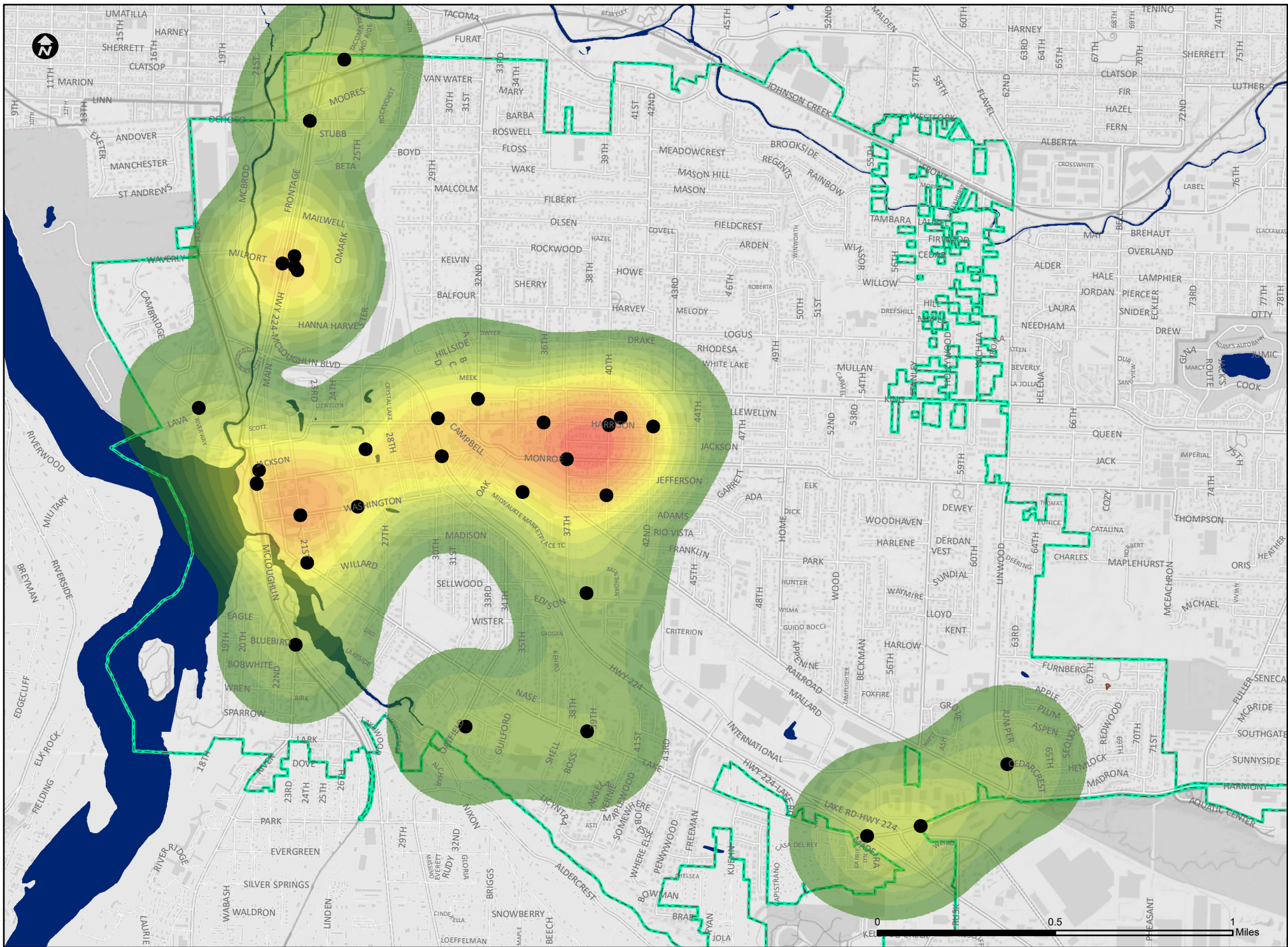


Injury Related Traffic Accidents 2024

- Traffic Accidents Injury Related
- Milwaukie City Limits
- Increased Accidents

The information depicted on this map is for general reference only. The City of Milwaukie cannot accept any responsibility for errors, omissions or positional accuracy. There are no warranties, expressed or implied, including the warranty of merchantability or fitness for a particular purpose, accompanying this product. However, notification of errors would be appreciated. Date: 2/10/2025 Data Sources: City of Milwaukie GIS, Metro Data Resource Center.





Injury Related Traffic Accidents 2023

● Traffic Accidents Injury Related

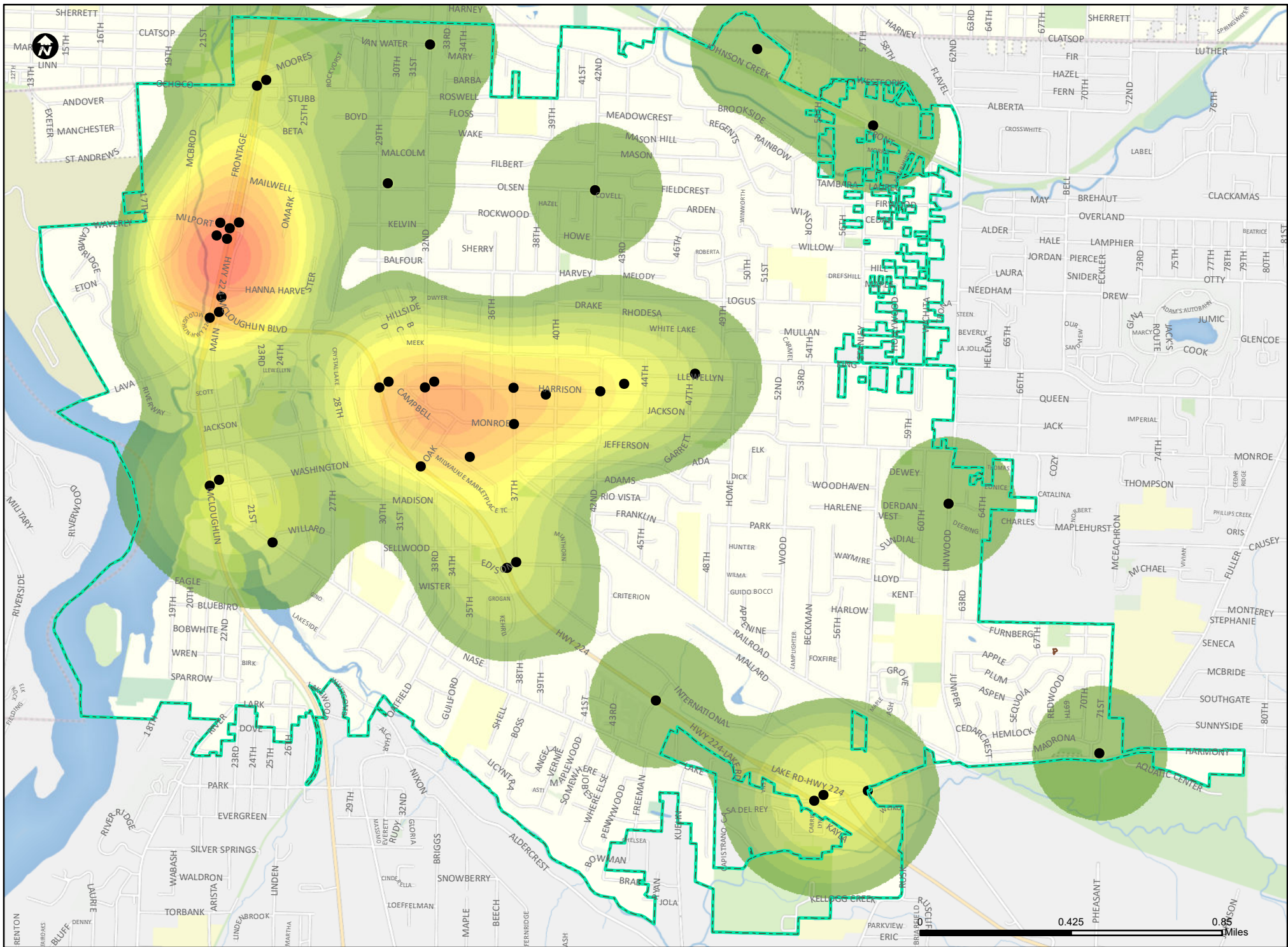
▭ Milwaukee City Limits



Increased Accidents

The information depicted on this map is for general reference only. The City of Milwaukee cannot accept any responsibility for errors, omissions or positional accuracy. There are no warranties, expressed or implied, Date: 1/25/2024 including the warranty of merchantability or fitness for a particular purpose, accompanying this product. However, notification of errors would be appreciated. Data Sources: City of Milwaukee GIS, Metro Data Resource Center.





Injury Related Traffic Accidents 2022

● Traffic Accidents Injury Related

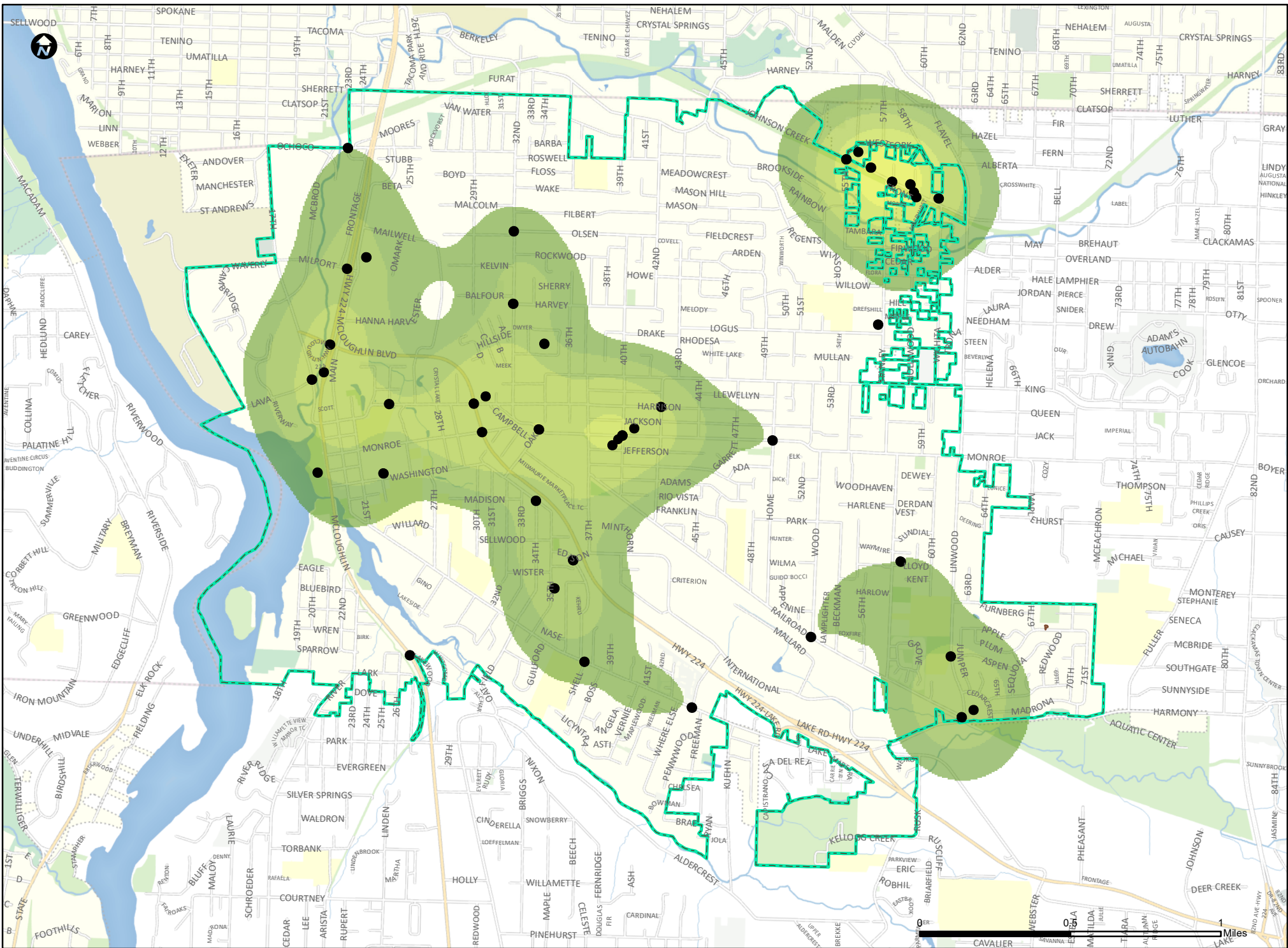
▭ Milwaukie City Limits



Increased Accidents

The information depicted on this map is for general reference only. The City of Milwaukie cannot accept any responsibility for errors, omissions or positional accuracy. There are no warranties, expressed or implied, Date: 2/27/2023 including the warranty of merchantability or fitness for a particular purpose, accompanying this product. However, notification of errors would be appreciated. Data Sources: City of Milwaukie GIS, Metro Data Resource Center.

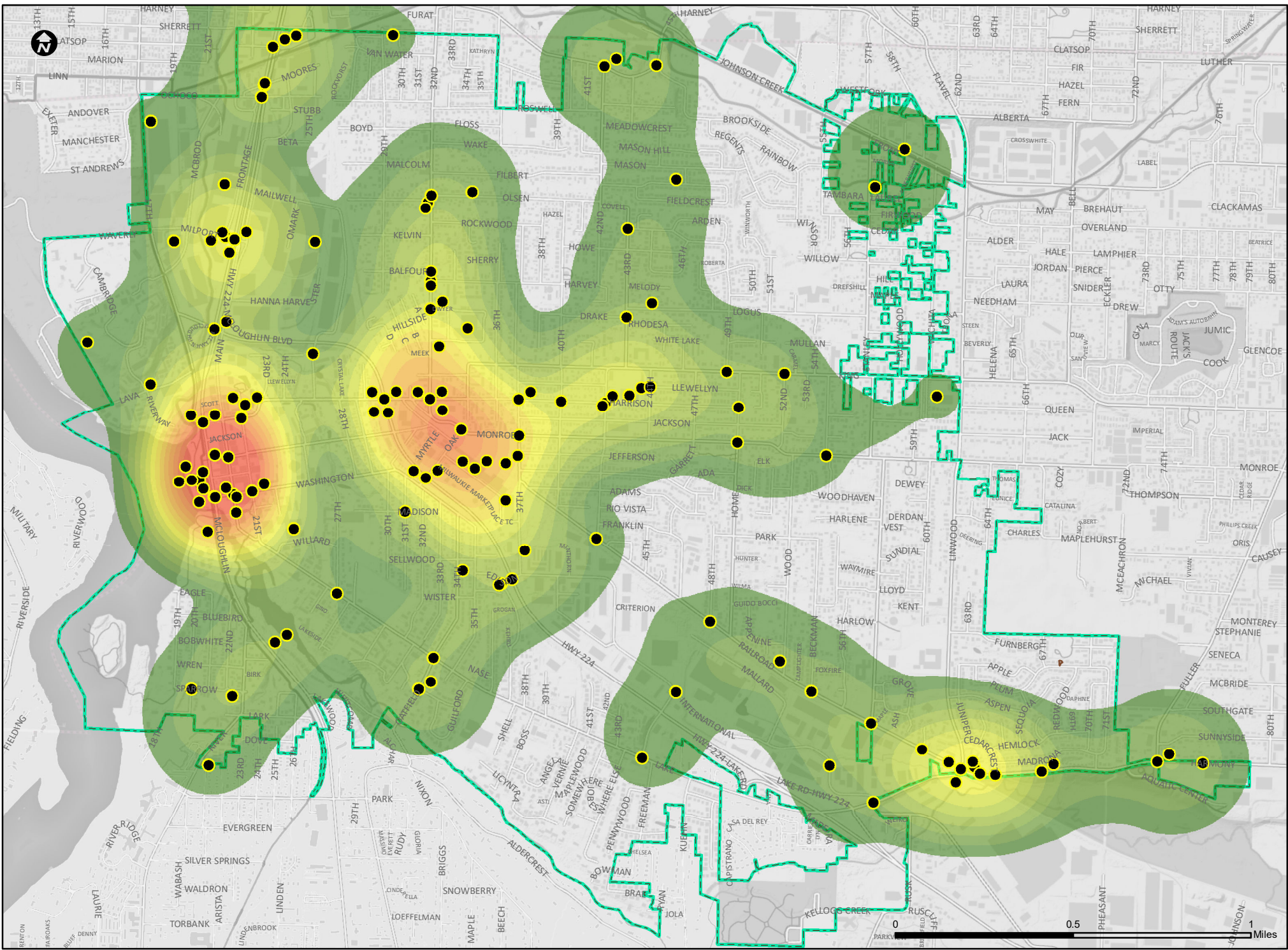




Non-Injury Related Traffic Accidents 2021 • Traffic Accidents Injury Related Milwaukie City Limits Increased Accidents

The information depicted on this map is for general reference only. The City of Milwaukie cannot accept any responsibility for errors, omissions or positional accuracy. There are no warranties, expressed or implied. Date: 1/21/2022 including the warranty of merchantability or fitness for a particular purpose, accompanying this product. However, notification of errors would be appreciated. Data Sources: City of Milwaukie GIS, Metro Data Resource Center.



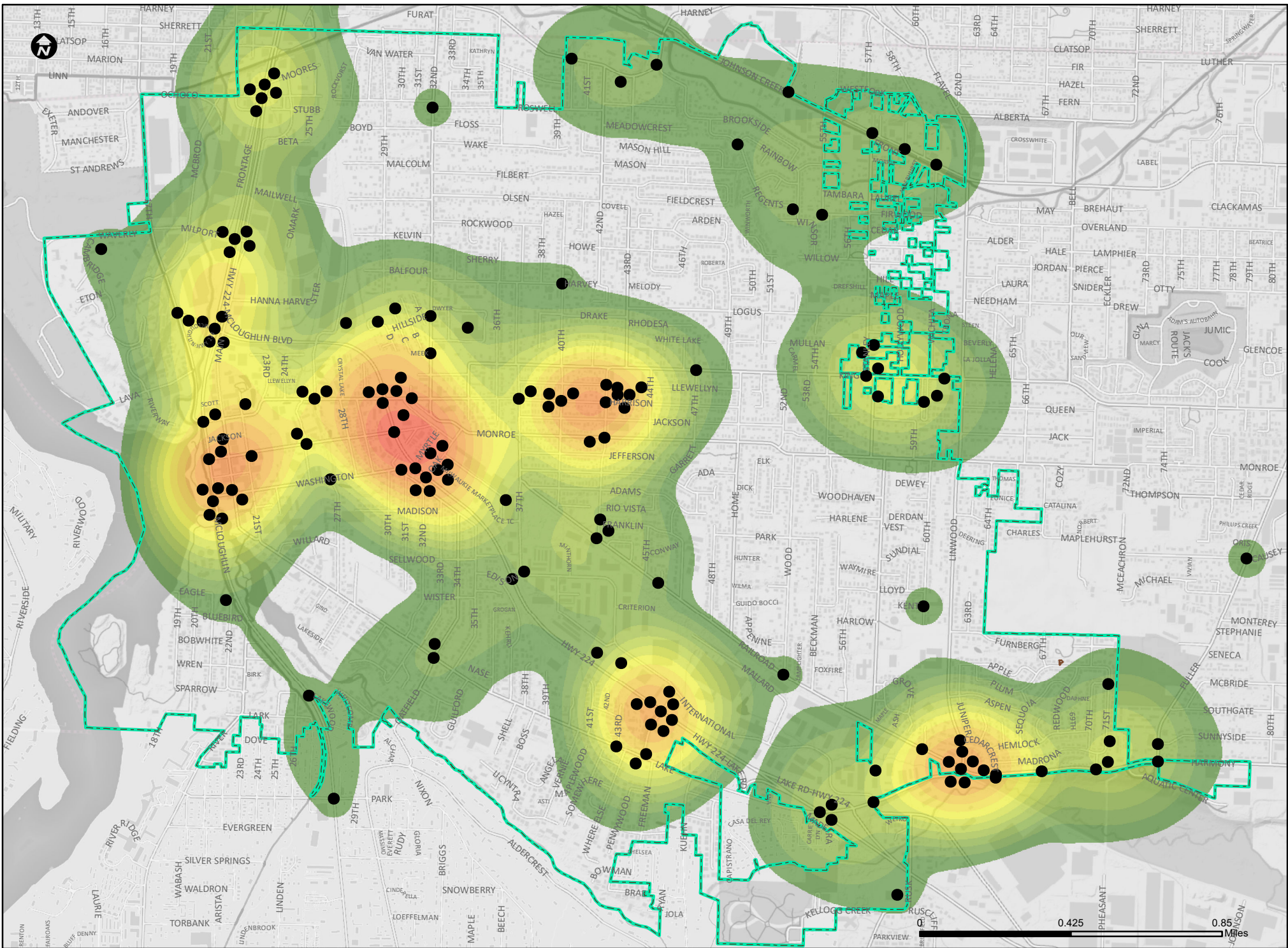


Non-Injury Related Traffic Accidents 2024

● Traffic Accidents Non-Injury Related □ Milwaukie City Limits [Color Scale] Increased Accidents

The information depicted on this map is for general reference only. The City of Milwaukie cannot accept any responsibility for errors, omissions or positional accuracy. There are no warranties, expressed or implied, including the warranty of merchantability or fitness for a particular purpose, accompanying this product. However, notification of errors would be appreciated. Date: 2/11/2025 Data Sources: City of Milwaukie GIS, Metro Data Resource Center.



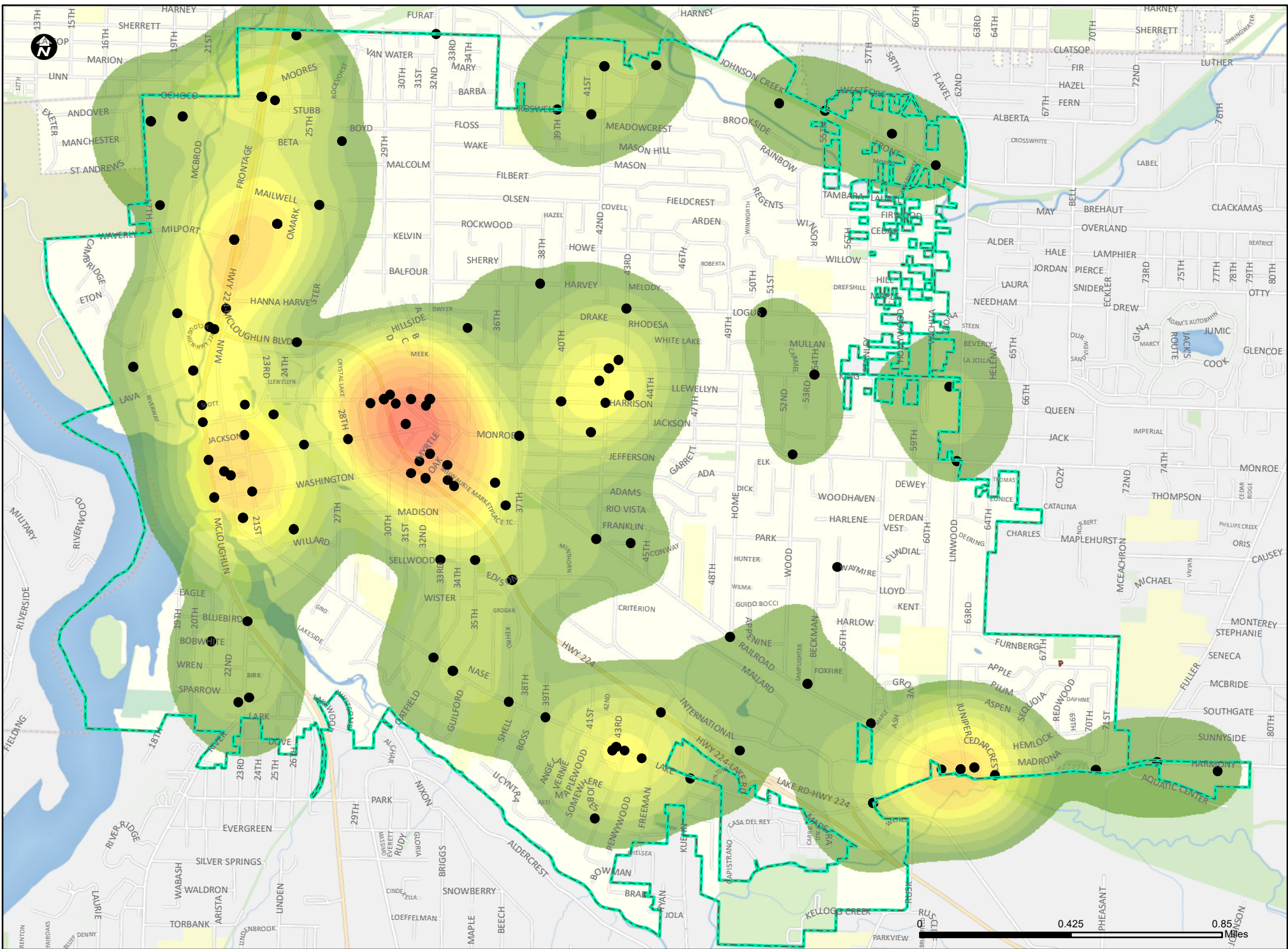


Non-Injury Related Traffic Accidents 2023

• Traffic Accidents Non-Injury Related Milwaukee City Limits Increased Accidents

The information depicted on this map is for general reference only. The City of Milwaukee cannot accept any responsibility for errors, omissions or positional accuracy. There are no warranties, expressed or implied, Date: 1/25/2024 including the warranty of merchantability or fitness for a particular purpose, accompanying this product. However, notification of errors would be appreciated. Data Sources: City of Milwaukee GIS, Metro Data Resource Center.



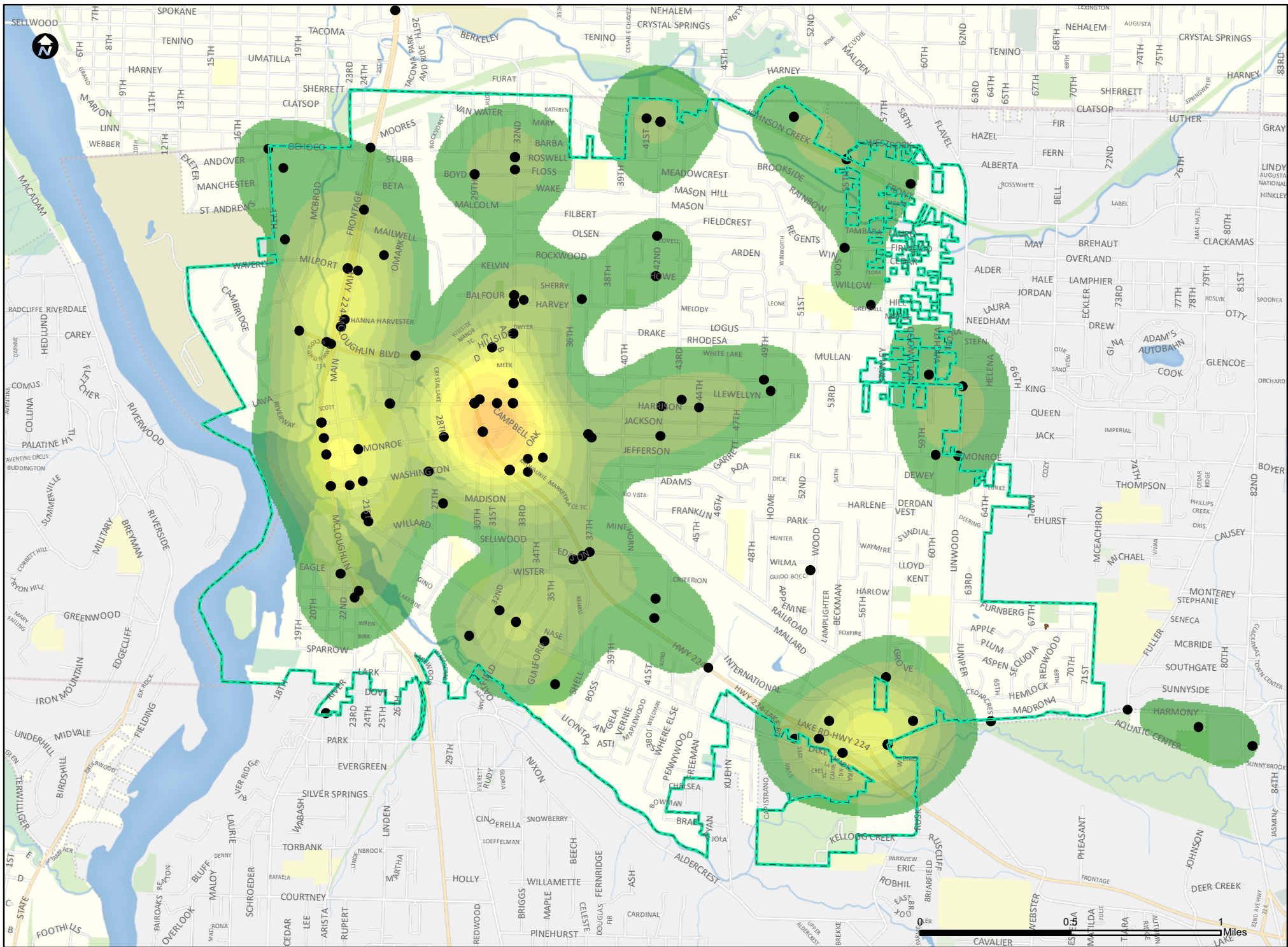


Non-Injury Related Traffic Accidents 2022

• Traffic Accidents Non-Injury Related Milwaukee City Limits Increased Accidents

The information depicted on this map is for general reference only. The City of Milwaukee cannot accept any responsibility for errors, omissions or positional accuracy. There are no warranties, expressed or implied, Date: 2/27/2023 including the warranty of merchantability or fitness for a particular purpose, accompanying this product. However, notification of errors would be appreciated. Data Sources: City of Milwaukee GIS, Metro Data Resource Center.





Non-Injury Related Traffic Accidents 2021

• Traffic Accidents Non-Injury Related



Increased Accidents

The information depicted on this map is for general reference only. The City of Milwaukee cannot accept any responsibility for errors, omissions or positional accuracy. There are no warranties, expressed or implied, including the warranty of merchantability or fitness for a particular purpose, accompanying this product. However, notification of errors would be appreciated. Date: 1/21/2022. Data Sources: City of Milwaukee GIS, Metro Data Resource Center.

